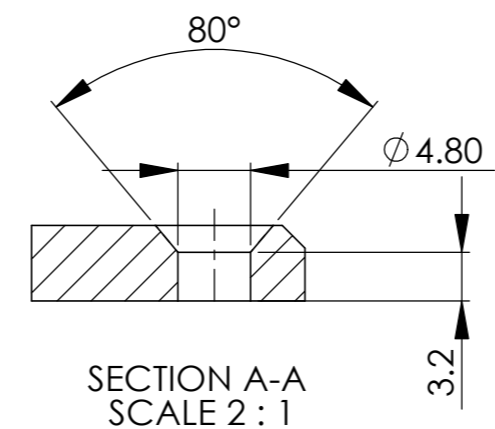
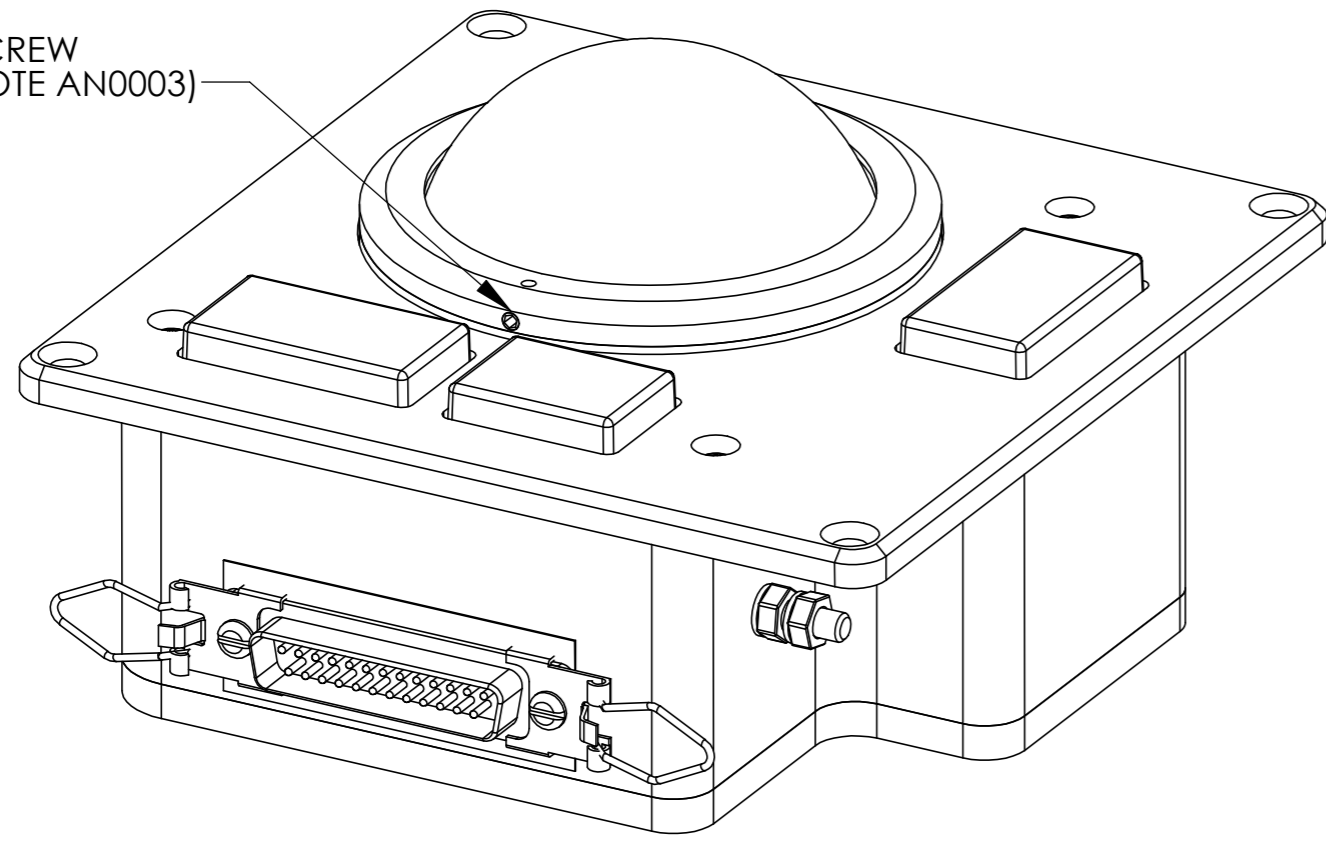


DWG NO.  
F60-563110

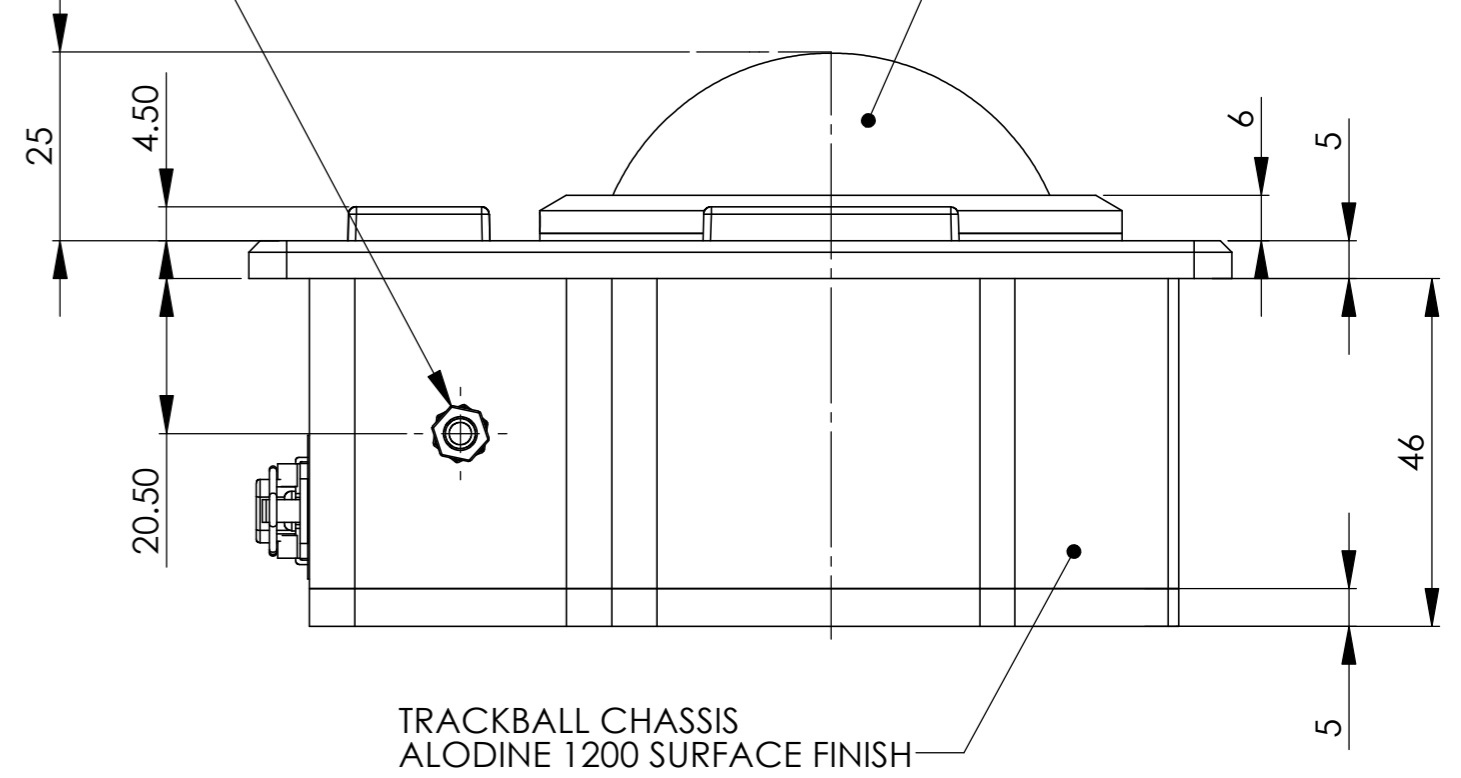
A2

SERVICE LOCKING SCREW  
(SEE APPLICATION NOTE AN0003)



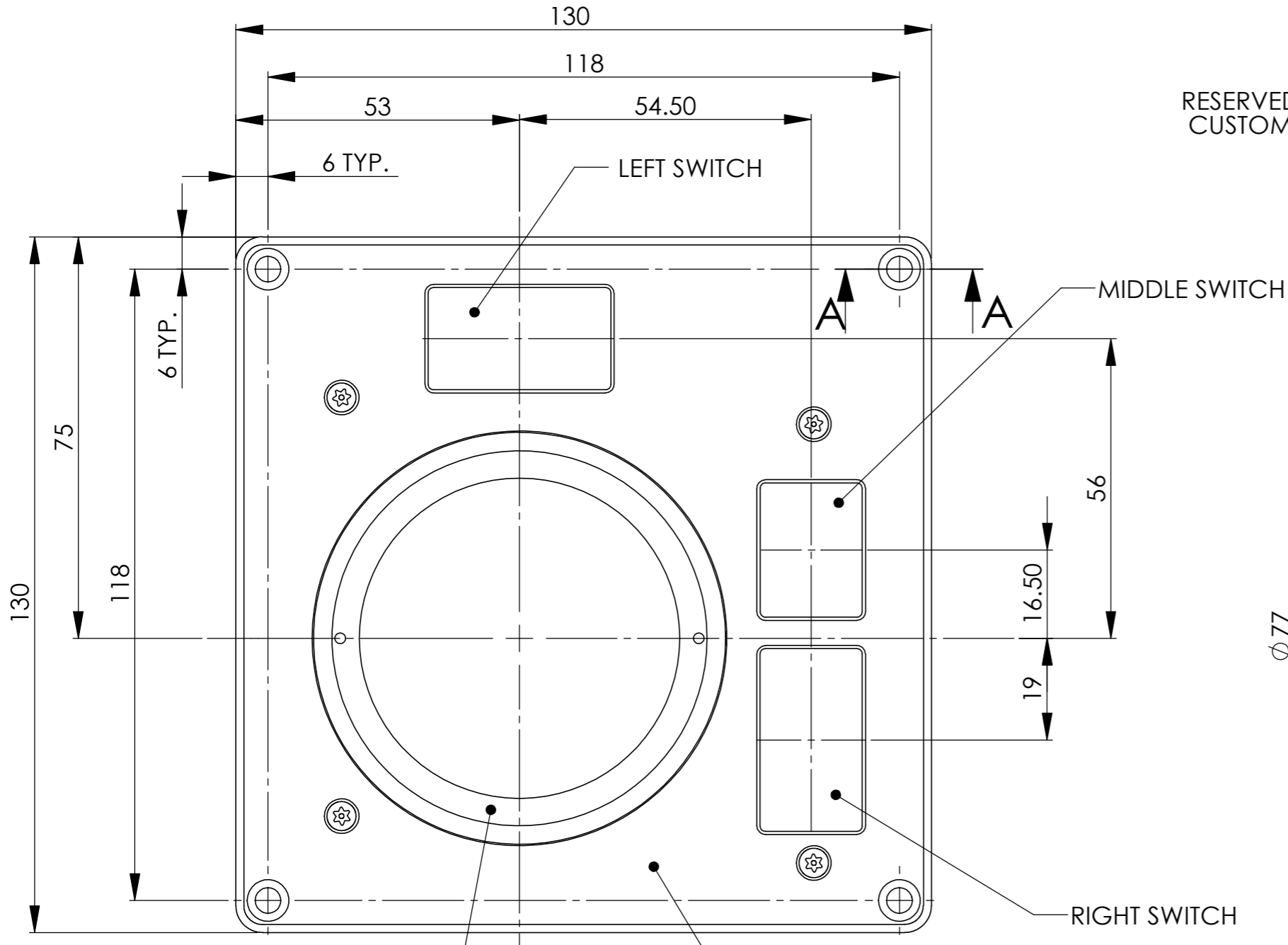
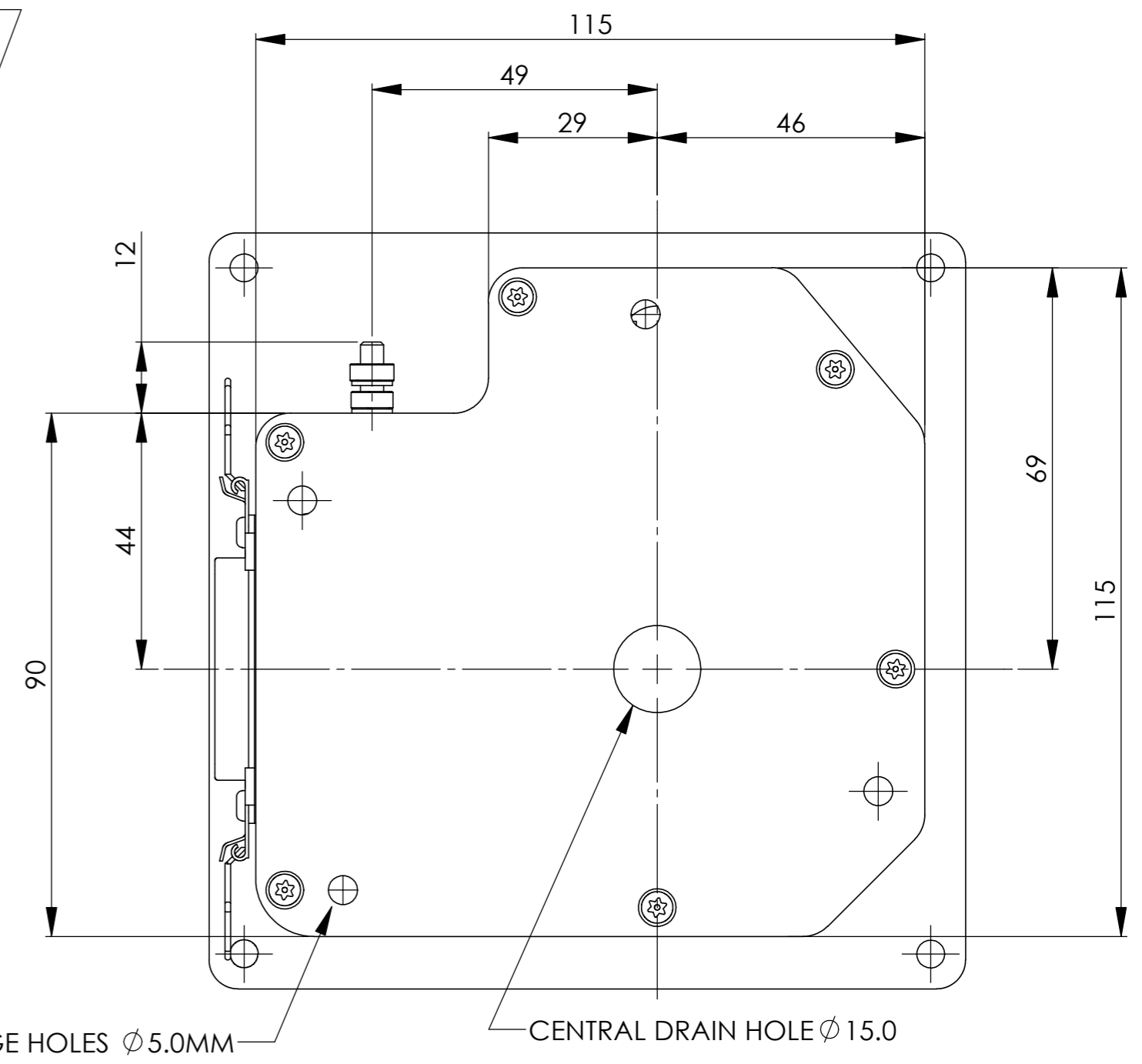
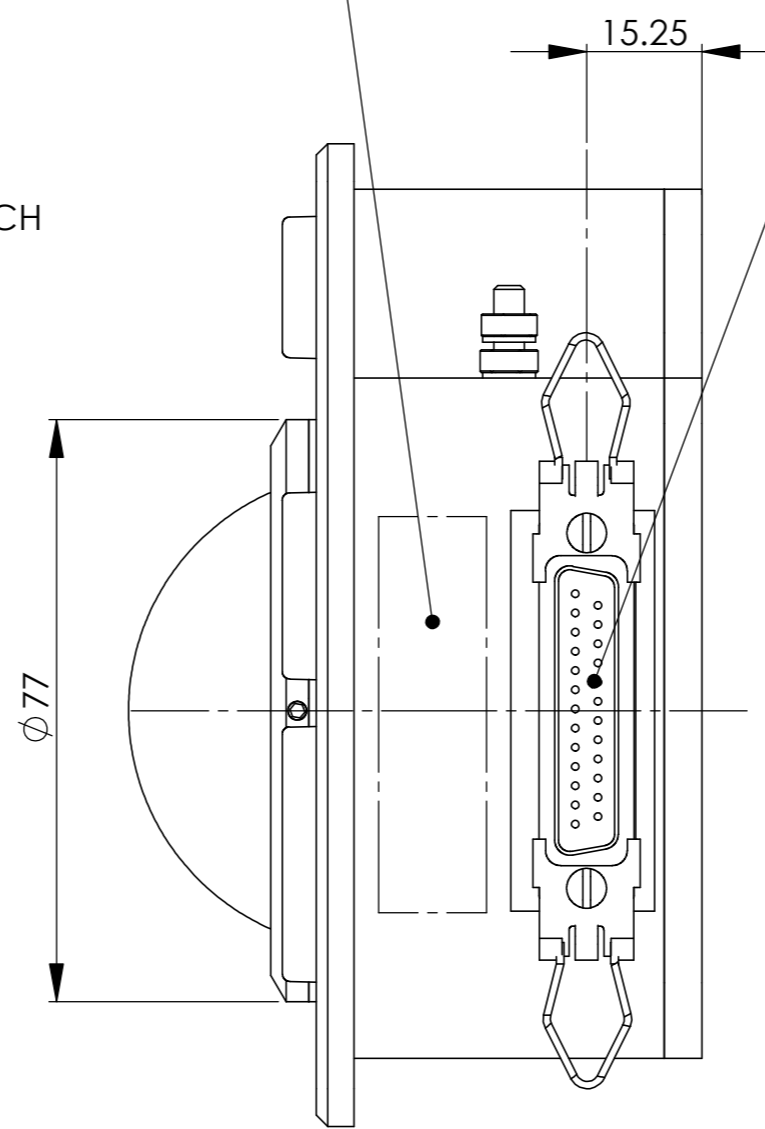
M4 GROUND CONNECTION

BALL  $\phi$  63.2MM



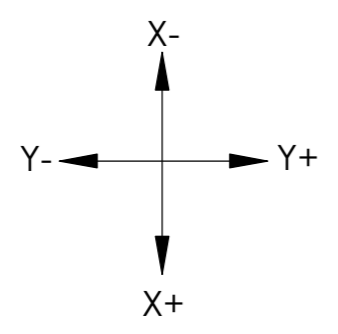
CANNON 25 WAY D SUB CONNECTOR  
PART No: DBMM25P  
FITTED WITH SPRING LATCH D110277

RESERVED SECTION FOR  
CUSTOMER PART LABEL

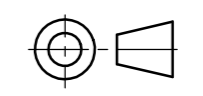


REMOVABLE RING, BLACK ANODISED,  
USER DEFINED FRICTION BY ROTATING  
180° ANTI-CLOCKWISE

TOP PLATE,  
BLACK ANODISED



UNLESS OTHERWISE SPECIFIED:  
DIMENSIONS ARE IN MILLIMETERS  
TOLERANCES:  
X.X ±0.10  
X.XX ±0.05  
ANG ±1°



3RD ANGLE PROJECTION

**Cursor Controls Ltd**

© The information contained in this document is the copyright of CURSOR CONTROLS Ltd. It may NOT be reproduced without written consent from the company.

DRAWN TO BS8888  
DRAWN: N.S. DATE: 17.07.07  
CHK'D:

GENERAL NOTES:  
DEBUR AND BREAK SHARP EDGES  
DO NOT SCALE

TITLE: **F60 TRACKBALL**

MATERIAL (MUST BE RoSH COMPLIANT):  
SEE DRAWING

FINISH: SEE DRAWING  
SCALE: 1:1 SHEET: 1

DWG NO. **F60-563110** REV: -

| REVISIONS |       |             |        |          |
|-----------|-------|-------------|--------|----------|
| REV.      | DRAWN | DESCRIPTION | CN No: | DATE     |
| -         | N.S.  | DRAFT       |        | 17.07.07 |