



Ingeniería Electrónica
SMART IDENT

FOUR STACKER CARD ISSUING MACHINE

Specifications

User Manual

CIM-7000 Rev. D

Doc No	CIM-7XXX SPECIFICATION	REV	PAGE	DATE
			C	2 OF 63

CIM-7XXX Series
Four Stacker Card Issuing Machine
for Magnetic, IC, RF Card

Doc No	CIM-7XXX SPECIFICATION	REV	PAGE	DATE
		C	3 OF 63	2011. 03

REVISION HISTORY

No	DATE	DESCRIPTION	REV	PAGE
1	2008.05	First edition	A	54
2	2008.09	RF only type is added.	B	57
3	2010.09	Dimension Upgrade	C	19-25
4	2011.03	High/Low Co select function is added	D	62
5				
6				

Doc No	CIM-7XXX SPECIFICATION	REV	PAGE	DATE
		C	4 OF 63	2011. 03

MODEL NAME INFORMATION

C I M - 7

INTERFACE	FUNCTION	MS / IC / RF	TRACK	OPTION	CAPACITY				OPTION II	OPTION III	OPTION IV
RS-232C	7: Four Cartridge Issuing Machine	0 : -	0 : Without Magnetic	0: Without Bezel	A:0.2T	G:0.2T	M:0.2T	S:0.2T	0 : - D:Card Drop (Without Bezel)	0: - H : HI-CO & LOW-CO Selector	P : Thermal Printer Module
		1 : MS Only	1 : ISO 1 Track	1: LOW-CO Short Bezel	B:0.38T	H:0.38T	N:0.38T	T:0.38T			
		2 : MS & IC-Contact	2 : ISO 2 Track	2: HI-CO Short Bezel	C:0.5T	I:0.5T	O:0.5T	U:0.5T			
		3 : MS & RF	3 : ISO 3 Track	3: LOW-CO & Shutter	D:0.76T	J:0.76T	P:0.76T	V:0.76T			
		4 : MS & IC & RF	4 : ISO 1,2 Track	4: HI-CO & Shutter	E:0.84T	K:0.84T	Q:0.84T	W:0.84T			
		5 : IC Only	5 : ISO 1,3 Track	5: Shutter	F:1.0T	L:1.0T	R:1.0T	X:1.0T			
		6 : RF Only	6 : ISO 2,3 Track	6: Short Bezel							
		7 : IC-Contact & RF	7 : ISO 1,2,3 Track	7: LOW-CO Without Bezel	400PCS	800PCS	1200PCS	2000PCS			
		8 : MS Read Only		8: HI-CO Without Bezel	(100X4)	(200X4)	(300X4)	(500X4)			

#. NOTE: CIM-79XXX are CUSTOM PRODUCTS.

Doc No	CIM-7XXX SPECIFICATION	REV	PAGE	DATE
		C	5 OF 63	2011. 03

C O N T E N T S

Overview -----	5
System Block Diagram -----	6
Specification -----	8
Magnetic Card Process -----	10
IC Card Process -----	11
RF Card Process -----	12
Communication Interface -----	13
Technical Drawing -----	19
Command Detail -----	26
Error Detail -----	56
Precautions -----	62

Doc No	CIM-7XXX SPECIFICATION	REV	PAGE	DATE
		C	6 OF 63	2011. 03

OVERVIEW

CIM7XXX Series is a set of card issuing machine for the magnetic, IC, and RF card in conjunction with the KYT2600 and KYT3000 series.

KYT-4XXX Series is designed to provide 2,000 pcs cards capacity and 4 different card loading with 4 Stacker Card Dispenser.

This model can be used for magnetic card conforming to the ISO7816-2 standard and most of the IC cards conforming with the ISO7816-4 T=0,T=1. Additionally, this model also can be used for the RF card conforming to the MIFARE.

This model simplified the command for magnetic card, minimize the delay time occurs in the communication data processing, and improved the speed due to function to issue the all tracks at a time.

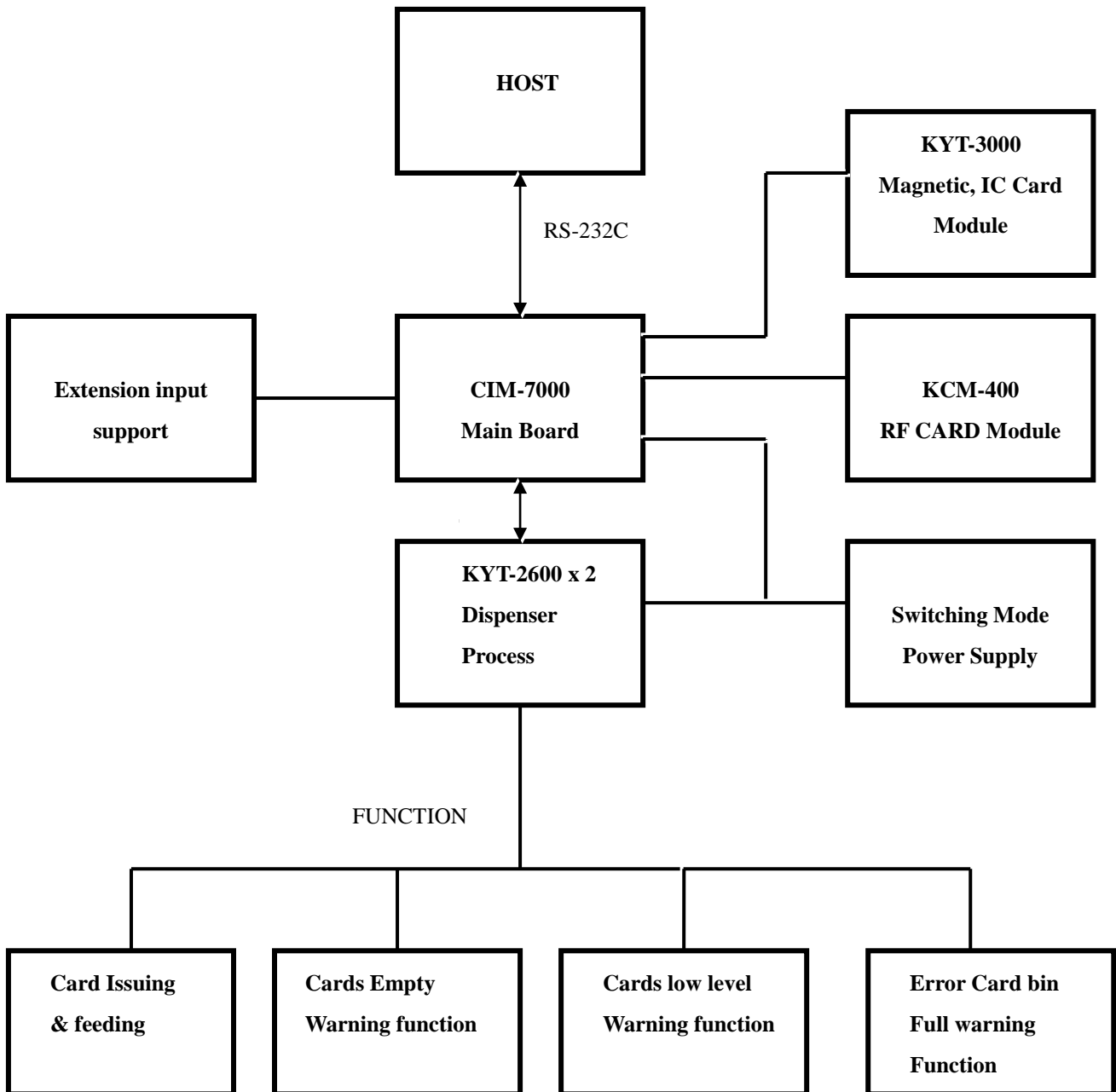
This model has the following advantages:

- 1) Remove the latency due to the user-based card exchange, by loading 1,000 PCS(0.76 mm card) at a time.
- 2) Use the different type of card using four cartridge.

As an automatic issuing machine, this model can be used in issuing most types of credit card and debit card in financial area.

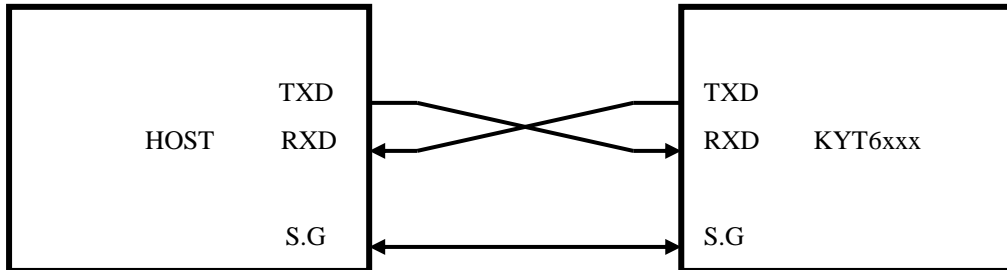
Doc No	CIM-7XXX SPECIFICATION	REV	PAGE	DATE
		C	7 OF 63	2011. 03

SYSTEM BLOCK DIAGRAM



Doc No	CIM-7XXX SPECIFICATION	REV	PAGE	DATE
		C	8 OF 63	2011. 03

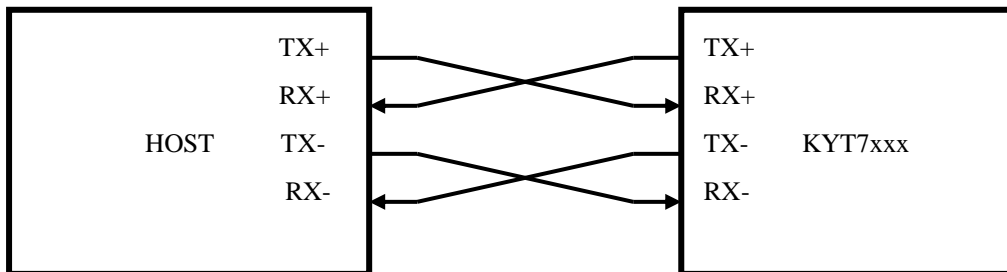
◆ *RS – 232 Connection*



CASE 1) Part Number : RED-9S-LNA(HIROSE)

Pin No	INDEX	Remark
2	RXD	Receive
3	TXD	Transmit
5	S.G	Signal Ground

◆ *RS422 Connection*



CASE 1) Part Number : RED-9S-LNA(HIROSE)

Pin No	INDEX	Remark
1	TX+	
4	RX+	
6	TX-	
8	RX-	

Doc No	CIM-7XXX SPECIFICATION	REV	PAGE	DATE
		C	9 OF 63	2011. 03

SPECIFICATIONS

◆ *basic functions*

	Spec	Remark
Weight	About 19Kg	
Input power	AC 110 ~ AC 220V Free voltage	DC input voltage: 24V Current consumption: 3A
Card Feeding Speed	510 mm/Sec ±10%	

◆ *Environment Requirements*

Operating Locus : in door use Only

Ambient Temperature

Storage : -20 °C to 70 °C(No functional error to be found in 12 hours after returning to normal environment)

Operating : 5 °C to 50°C (In 0°C to +5°C range, all specifications but 'Warped card' to be satisfied)

Ambient Relative Humidity

Storage : 0% to 95% RH(No functional error to be found in 12 hours after returning to normal environment)

Operating : 5 % 90% RH(No Condensation)

Vibration

: Amplitude 2mm, 10 to 50 Hz in X, Y, Z directions for 30min, 2G or less

Shock Endurance

: 30G, 11ms

Doc No	CIM-7XXX SPECIFICATION	REV	PAGE	DATE
			C	10 OF 63

◆ *Controller Environment*

Communication

: RS422 OR RS232C Interface

: Baud Rate – 9600 BPS

– 19200 BPS

– 38400BPS(Default)

– 57600BPS

: 8Data bit, 1 Start bit, None Parity bit, 1 Stop Bit

Doc No	CIM-7XXX SPECIFICATION	REV	PAGE	DATE
		C	11 OF 63	2011. 03

MAGNETIC CARD PROCESS

◆ *Total processing time*

: Less than 1.2 Sec

◆ *Life and Reliability*

Life of Head : Minimum 1,00,000 passes
(One pass is for forward or backward movement)

Error Rate : 3/1000 cycle

◆ *Reference Standards*

: ISO 7811-1,2,3,4,5 : identification cards – Recording technique

◆ *Recording*

	ISO Track 1	ISO Track 2	ISO Track 3
BPI	210	75	210
Capacity	Max 79	Max 40	Max 107
Reading Methods	F2F		
Length	Variable		
Card thickness	Plastic : 0.76 ±0.08mm		

Doc No	CIM-7XXX SPECIFICATION	REV	PAGE	DATE
		C	12 OF 63	2011. 03

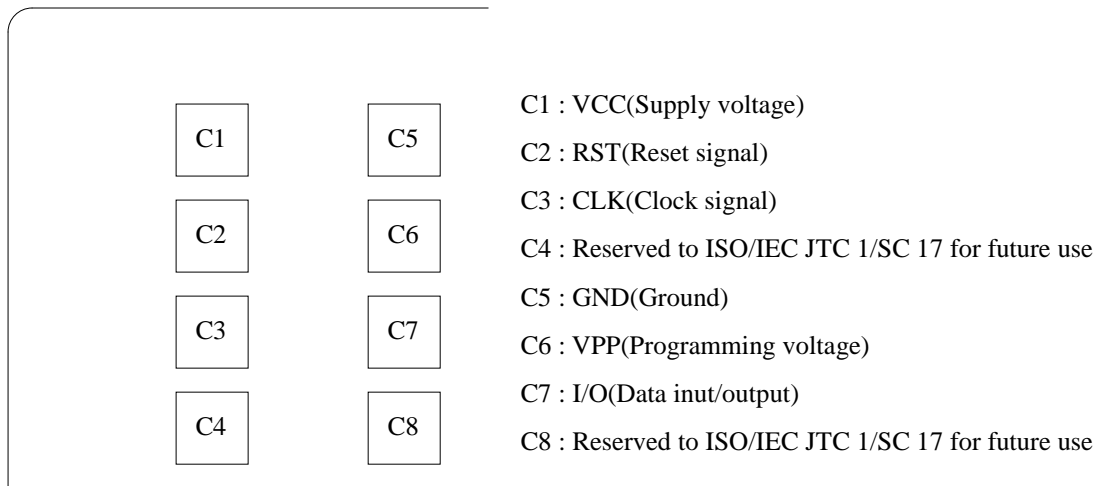
IC CARD PROCESS

This model provides most type of IC card compliant to ISO7816 T=0,T=1 .

◆ *Processing time* : Less than 1 Sec

◆ *Number and Location of the contacts on IC Card*

: Number and location of the contacts on IC Card is specified in ISO 7816-2 figure 2



◆ *Life and Reliability*

IC Contact : Approximately 1,000,000 passes

Error Rate : 5/1000 cycle

Doc No	CIM-7XXX SPECIFICATION	REV	PAGE	DATE
		C	13 OF 63	2011. 03

RF CARD PROCESS

The RF module supports most of RF cards conforming with the ISO14443-3 Type A (MIFARE Card) with 8 Kbits memory.

◆ *Processing time* : Once Block

Command	Parameter	Time (mSec)		Note
		Type	Max	
Card Read	1 Block	50		Without card moving
Card Write	1 Block	50		Without card moving, With Verify
Card Decrement	1 Block	80		Without card moving
Card Increment	1 Block	80		Without Card moving

◆ *Operating Frequency*

Operating Frequency : 13.56 MHz

Data Transfer Baud : Baud rate 106Kbaud

Doc No	CIM-7XXX SPECIFICATION	REV	PAGE	DATE
		C	14 OF 63	2011. 03

COMMUNICATION INTERFACE

◆ *Communication Method*

Asynchronous, Half duplex.

Baud Rate : 9600 – 57600Bps , Default : 38400Bps

Start Bit : 1Bit

Data Length : 8Bit

Parity : None

Stop Bit : 1Bit

◆ *Communication Protocol Format*

1 *Command Frame Format.*

SOH	Null	Length	STX	CMD	DATA	ETX	BCC
1 byte	1 byte	2 byte	1 byte	3 byte	N byte	1 byte	1 byte

(N byte: Variable length)

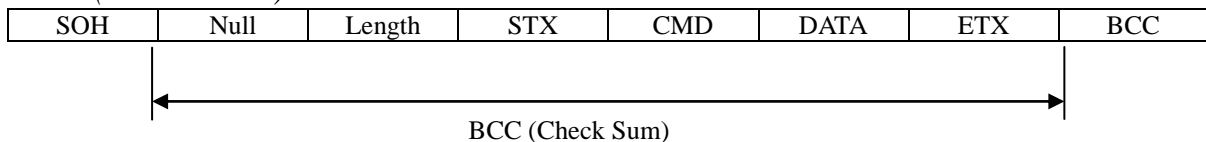
2 *Positive Response Frame Format*

SOH	Null	Length	STX	CMD	GOOD	0x01	DATA	ETX	BCC
1 byte	1 byte	2 byte	1 byte	3 byte	2 byte	1 byte	N byte	1 byte	1 byte

3 *Negative Response Frame Format*

SOH	Null	Length	STX	CMD	E-Code	0x00	ETX	BCC
1 byte	1 byte	2 byte	1 byte	3 byte	2 byte	1 byte	1 byte	1 byte

4 *BCC (Check Sum)*



Command Frame BCC = Null ^ Length ^ STX ^ CMD ^ DATA ^ ETX.

Positive Response BCC = Null ^ Length ^ STX ^ CMD ^ GOOD ^ 0x01 ^ DATA ^ ETX.

Negative Response BCC = Null ^ Length ^ STX ^ CMD ^ E-Code ^ ETX.

Doc No	CIM-7XXX SPECIFICATION	REV	PAGE	DATE
		C	15 OF 63	2011. 03

5. Explanatory note of technical words

Name	Detail
Null	Reserved. Always 0x00.
Length	Data Length from the CMD to DATA.
CMD	Instruction Code (3 Bytes)
GOOD	Normal Execution : 0x0000 (2 Bytes)
E-Code	Command Failed: Refer to "Error Code" (2 Bytes)
BCC	Check Sum.

<Length>, <E-Code>

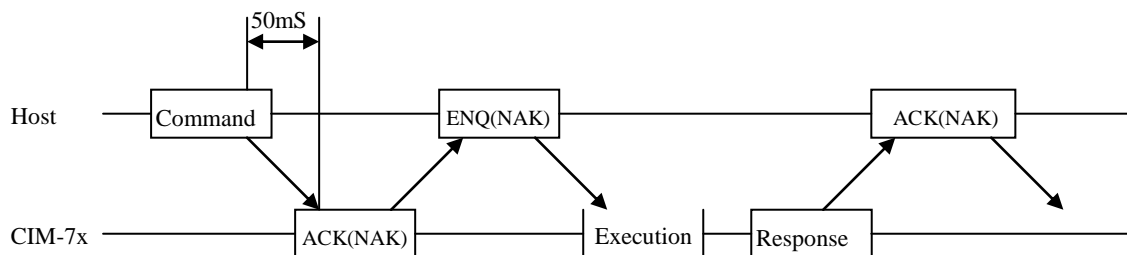
High Byte	Low Byte
-----------	----------

6. Control Characters

Name	Hex Value	Detail
SOH	0x01	Start of Header
STX	0x02	Start of Text
ETX	0x03	End of Text
ENQ	0x05	Enquiry
ACK	0x06	Positive Acknowledge
NAK	0x15	Negative Acknowledge
CAN	0x18	Cancel

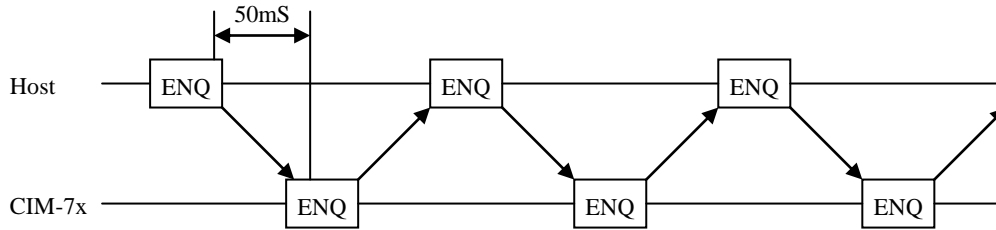
7 COMMUNICATION SEQUENCE / TIMING

7.1 Command



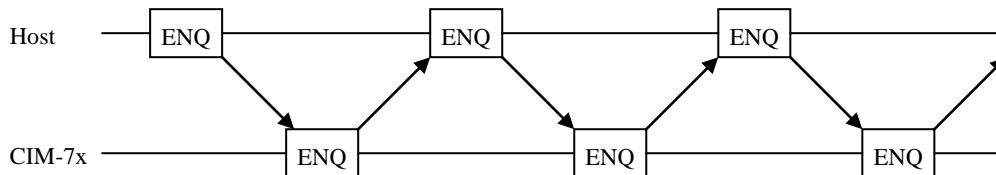
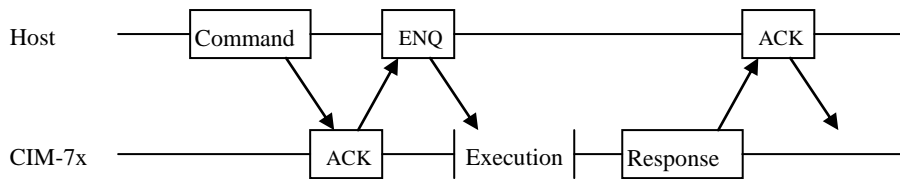
Doc No	CIM-7XXX SPECIFICATION	REV	PAGE	DATE
		C	16 OF 63	2011. 03

7.2 Inquiry



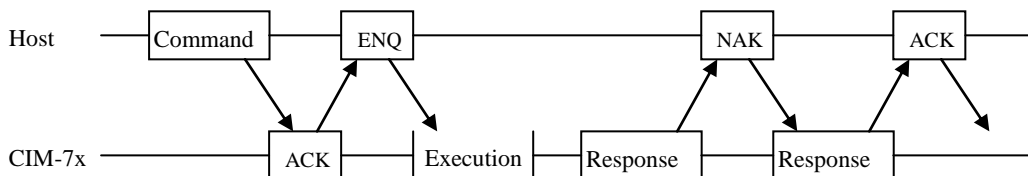
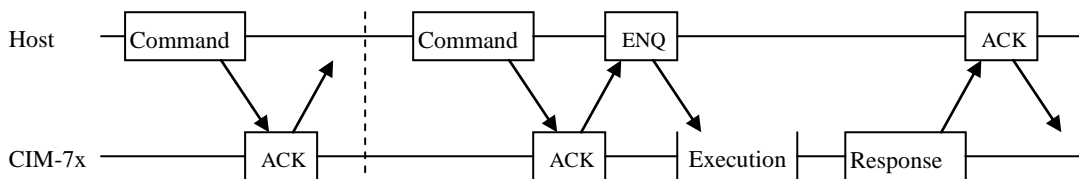
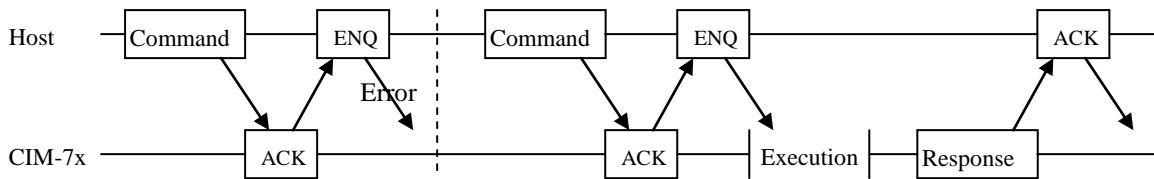
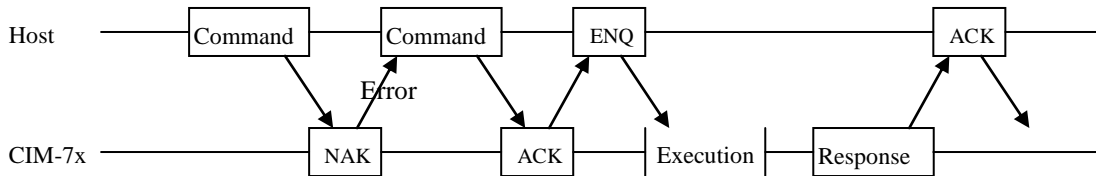
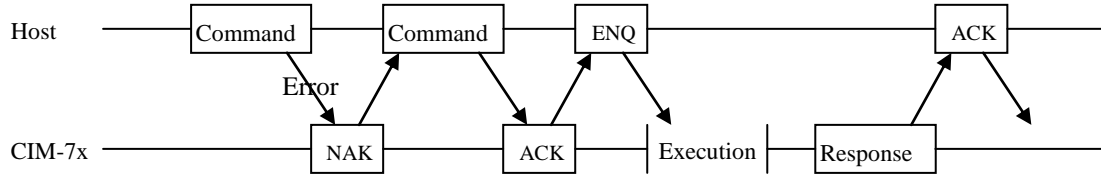
7.3 Sequence

7.3.1 General

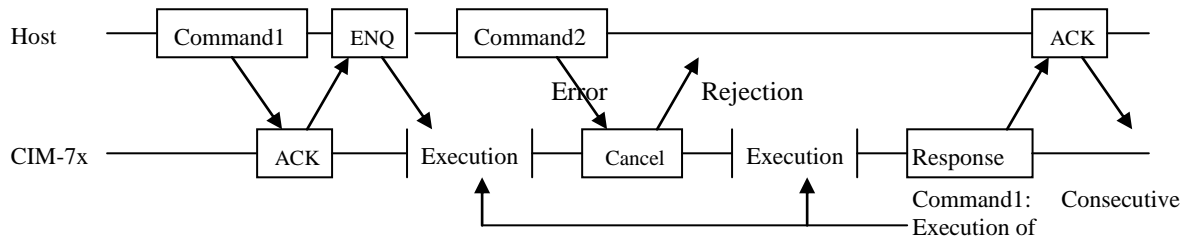
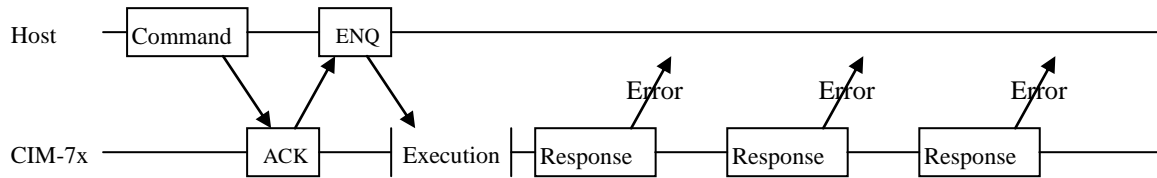
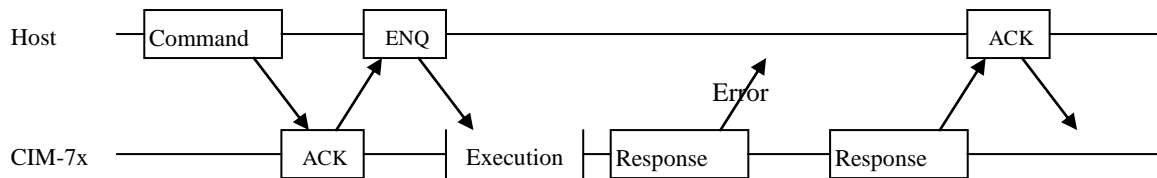
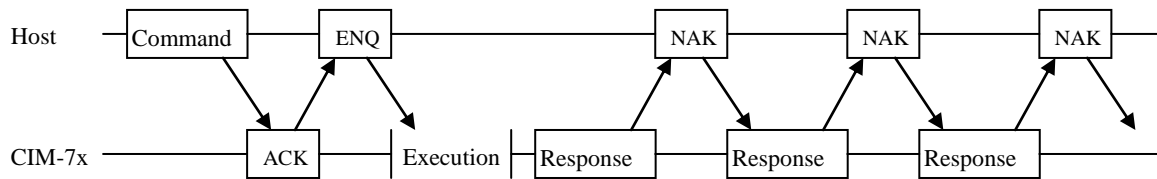
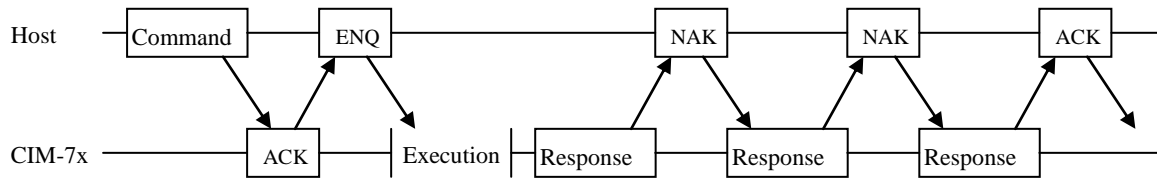


Doc No	CIM-7XXX SPECIFICATION	REV	PAGE	DATE
		C	17 OF 63	2011. 03

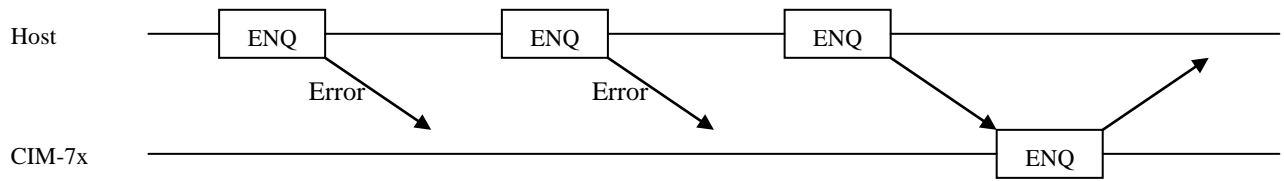
7.3.2 Event



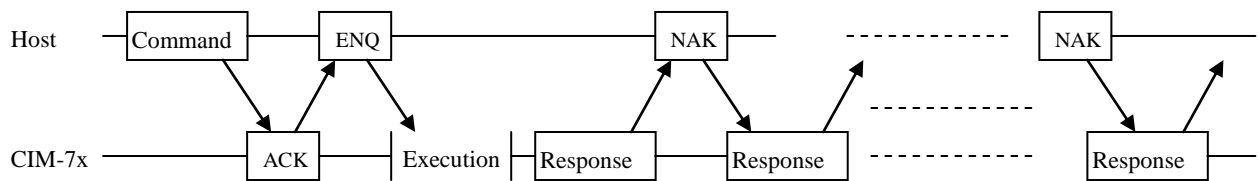
Doc No	CIM-7XXX SPECIFICATION	REV	PAGE	DATE
		C	18 OF 63	2011. 03



Doc No	CIM-7XXX SPECIFICATION	REV	PAGE	DATE
		C	19 OF 63	2011. 03



- When received the NAK packet consecutively.

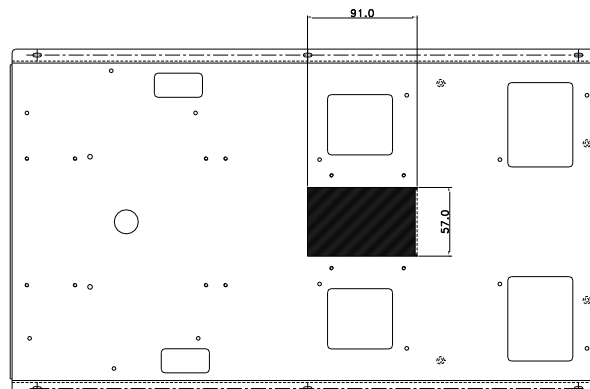
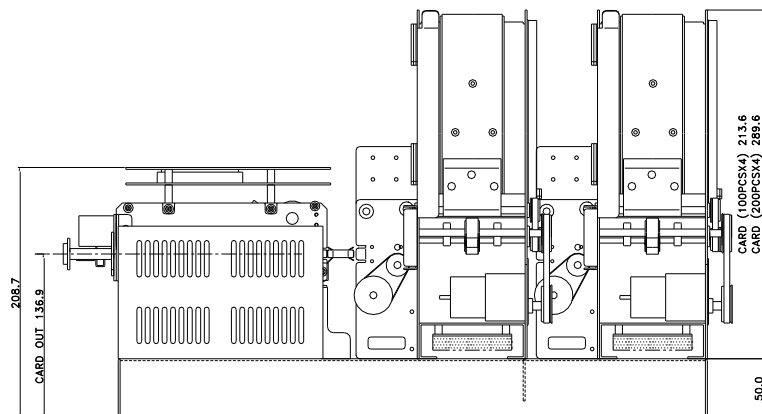
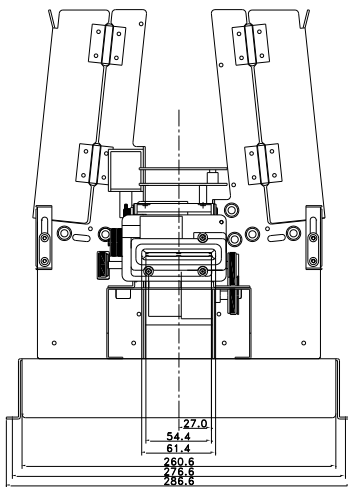
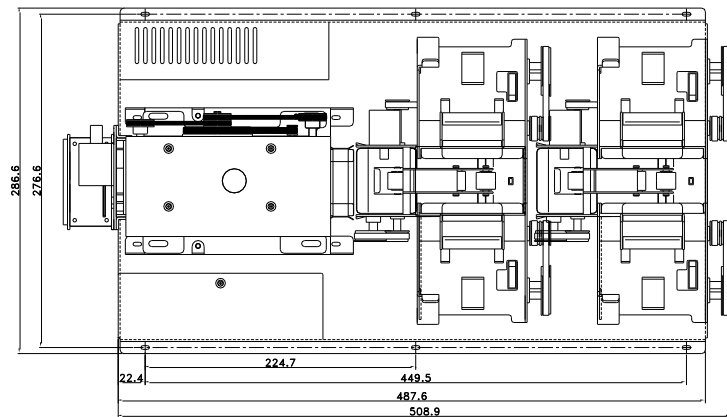


Doc No	CIM-7XXX SPECIFICATION	REV	PAGE	DATE
		C	20 OF 63	2011. 03

TECHNICAL DRAWING(Shutter type)

Model no: CIM-7100 , 7200 , 7300 , 7400 , 7500 , 7700 , 7800

Capacity : Card 400pcs(100X4) , 800pcs(200X4)

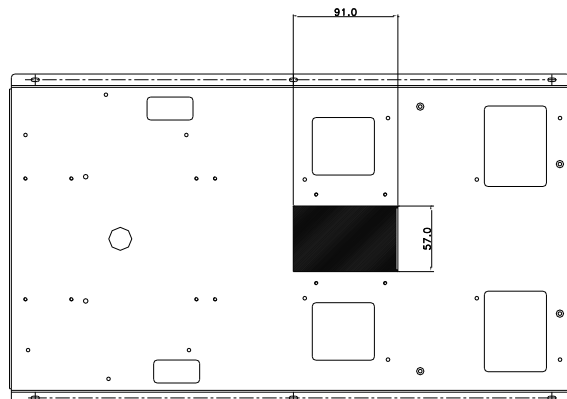
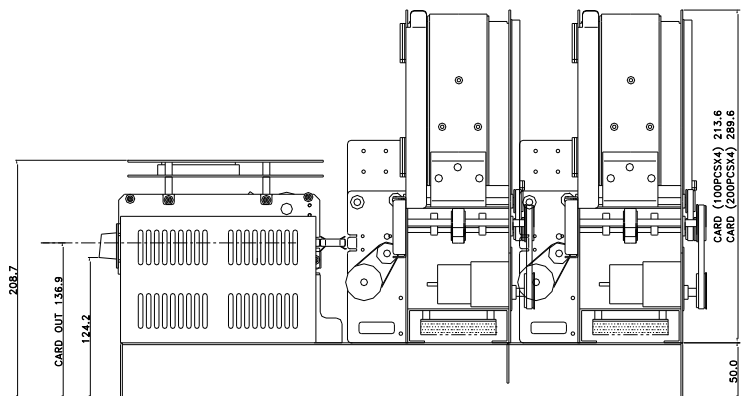
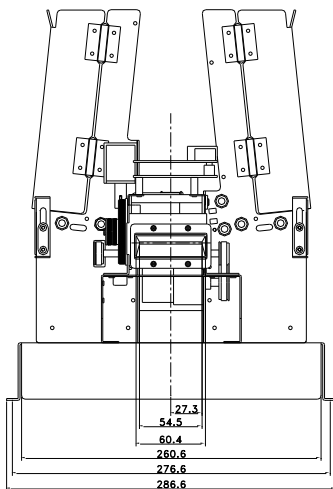
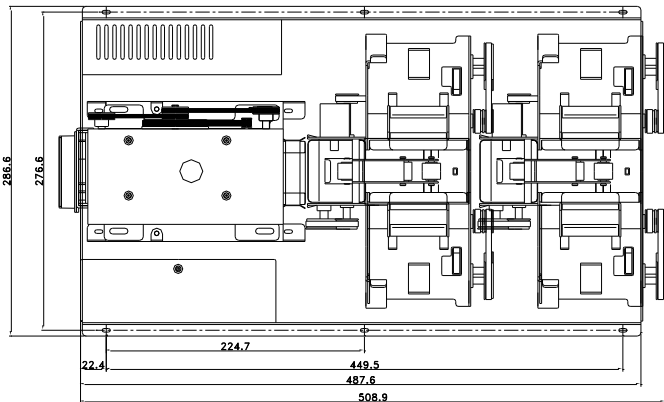


Doc No	CIM-7XXX SPECIFICATION	REV	PAGE	DATE
		C	21 OF 63	2011. 03

TECHNICAL DRAWING(Bezel type)

Model no: CIM-7100 , 7200 , 7300 , 7400 , 7500 , 7700 , 7800

Capacity : Card 400pcs(100X4) , 800pcs(200X4)

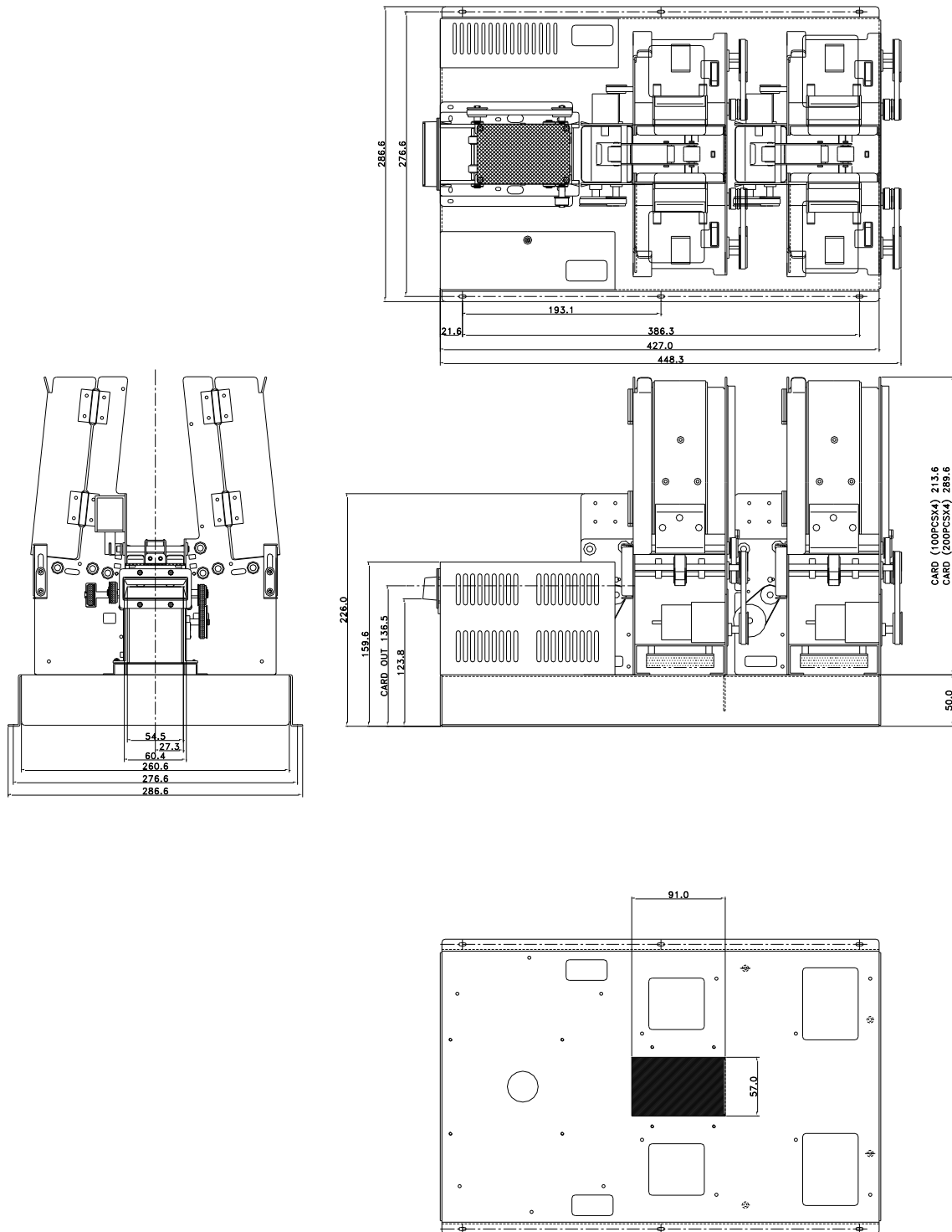


Doc No	CIM-7XXX SPECIFICATION	REV	PAGE	DATE
		C	22 OF 63	2011. 03

TECHNICAL DRAWING(RF Only)

Model no: CIM-7600

Capacity : Card 400pcs(100X4) , 800pcs(200X4)

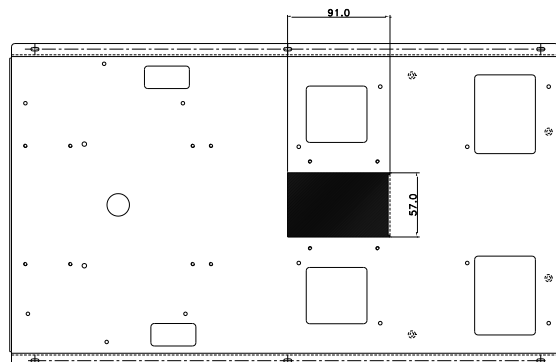
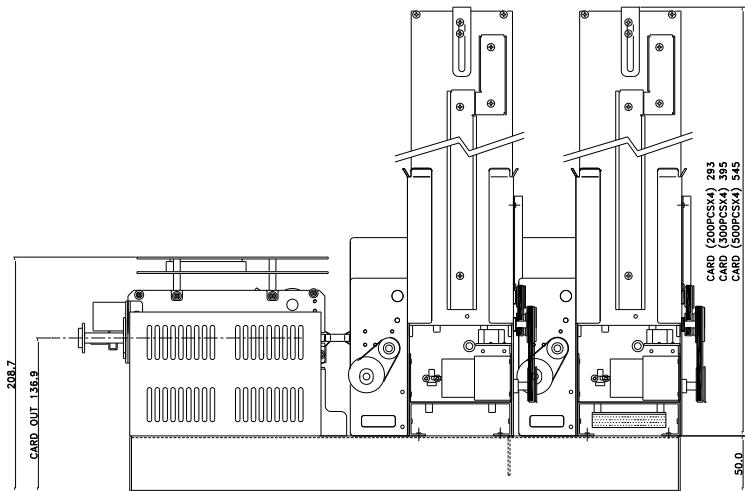
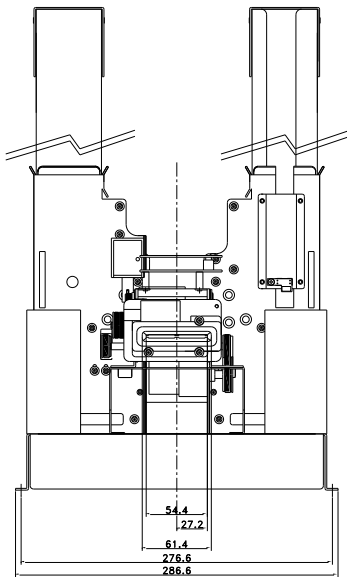
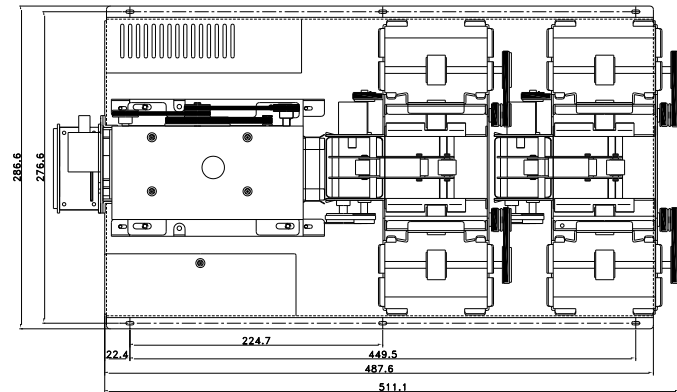


Doc No	CIM-7XXX SPECIFICATION	REV	PAGE	DATE
		C	23 OF 63	2011. 03

TECHNICAL DRAWING(Shutter type)

Model no: CIM-7100 , 7200 , 7300 , 7400 , 7500 , 7700 , 7800

Capacity : Card 800pcs(200X4) , 1200pcs(300X4) , 2000pcs(500X4)

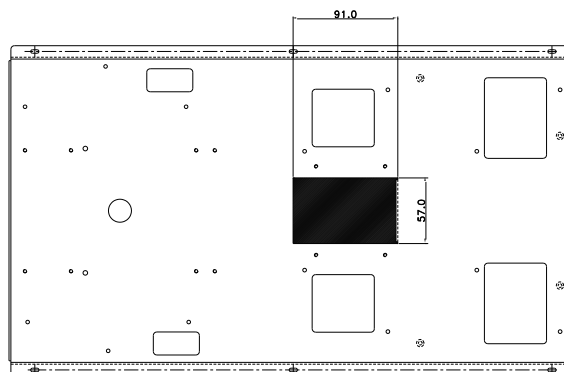
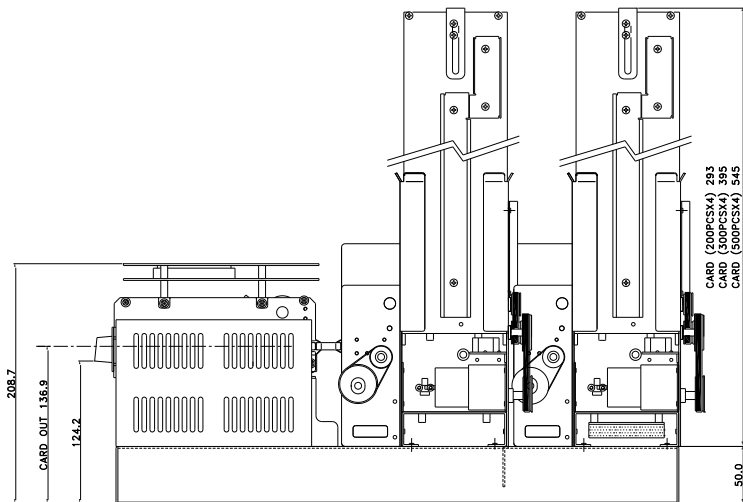
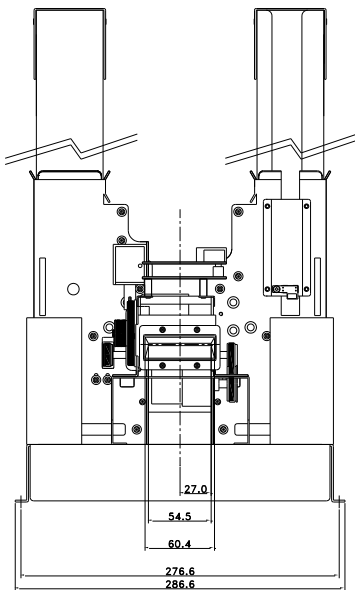
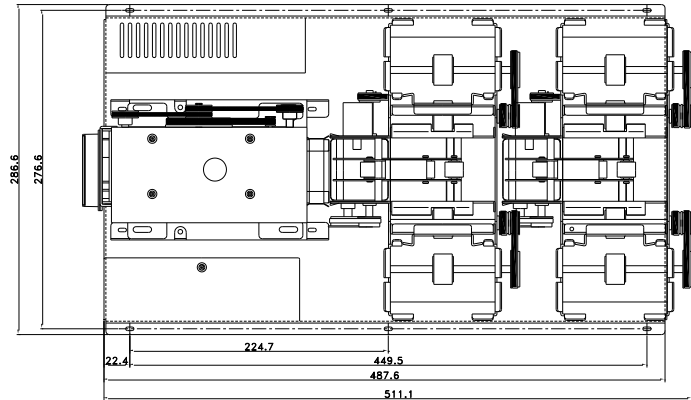


Doc No	CIM-7XXX SPECIFICATION	REV	PAGE	DATE
		C	24 OF 63	2011. 03

TECHNICAL DRAWING(Bezel type)

Model no: CIM-7100 , 7200 , 7300 , 7400 , 7500 , 7700 , 7800

Capacity : Card 800pcs(200X4) , 1200pcs(300X4) , 2000pcs(500X4)

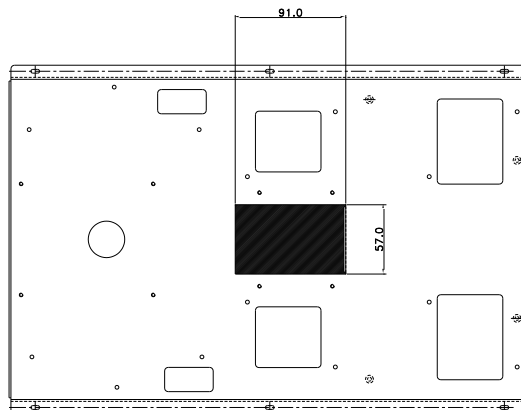
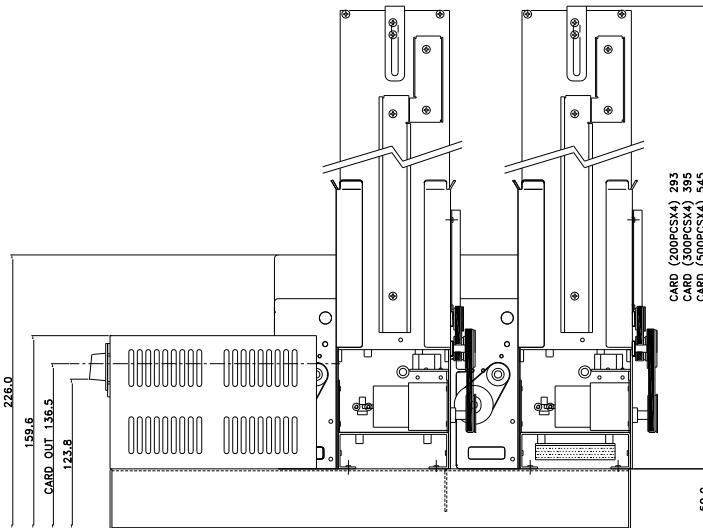
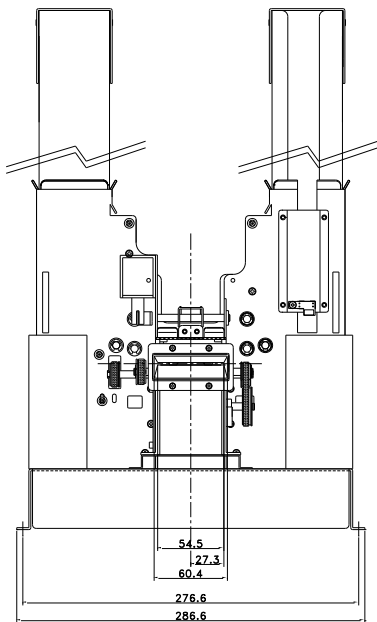
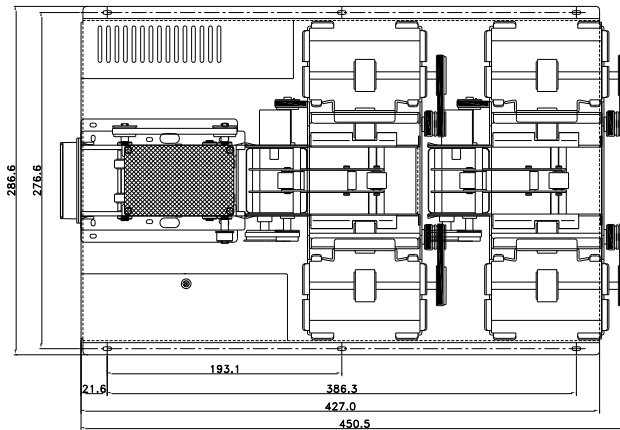


Doc No	CIM-7XXX SPECIFICATION	REV	PAGE	DATE
		C	25 OF 63	2011. 03

TECHNICAL DRAWING(RF Only)

Model no: CIM-7600

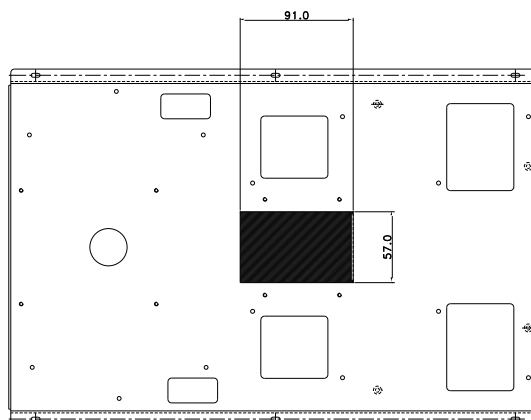
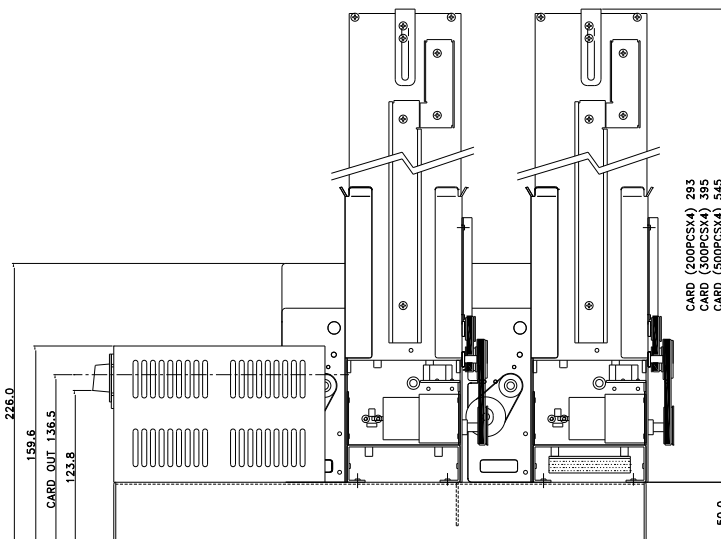
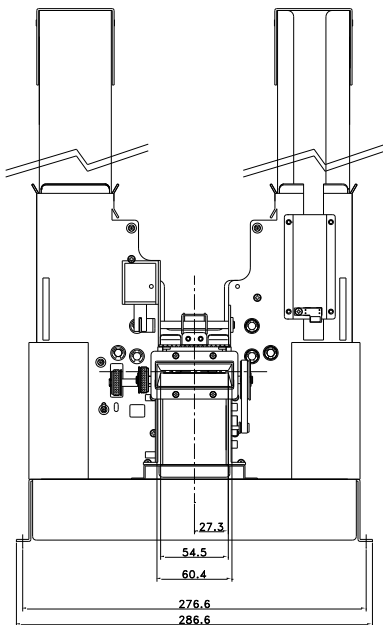
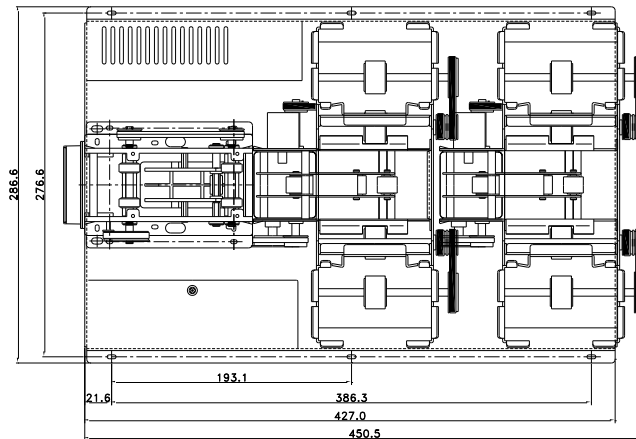
Capacity : Card 800pcs(200X4) , 1200pcs(300X4) , 2000pcs(500X4)



Doc No	CIM-7XXX SPECIFICATION	REV	PAGE	DATE
		C	26 OF 63	2011. 03

CUSTOM PRODUCT #1 DRAWING (CIM-7902)

- Without main control board, SMPS, RF module and MS/IC encoder module.
- Capacity : Card 800pcs(200X4) , 1200pcs(300X4) , 2000pcs(500X4)



Doc No	CIM-7XXX SPECIFICATION	REV	PAGE	DATE
		C	27 OF 63	2011. 03

COMMAND DETAIL

◆ *Command List*

	Item	Cm0	Cm1	Cm2	Detail	Note
COMMON	STATUS	'C'	'1'	'1'	Get Model	
		'C'	'1'	'2'	Get Firmware Version	
		'C'	'1'	'3'	Get Stacker	
		'C'	'1'	'4'	Get Status List	
		'C'	'1'	'5'	Get Error List	
		'C'	'1'	'6'	Get Card Position	
	SETTING_1	'C'	'2'	'1'	Set RTC IC	Check
		'C'	'2'	'4'	Set Retry Count	Check
		'C'	'2'	'5'	Set Buzz On/Off Cont.	Check
		'C'	'2'	'6'	Set Baud Rate	Check
	MOVE	'C'	'3'	'1'	Card Move From Stacker	
		'C'	'3'	'2'	Card Move To ...	
		'C'	'3'	'4'	Card Capture	Backward
		'C'	'3'	'6'	Card Eject (Drop Mode)	Forward
		'C'	'3'	'7'	Card Eject (Hold Mode)	Forward
	SETTING_2	C	'4'	'2'	Software Reset	
'C'		'4'	'8'	Select the Lo-co or High-co mode for Magnetic		
MAGNETIC CARD	MAGNETIC READ / WRITE	'M'	'3'	'1'	Magnetic Card Read	
		'M'	'3'	'3'	Magnetic Card Write	Verify**
		'M'	'3'	'4'	Magnetic Card Write From Stacker	Verify**
		'M'	'3'	'5'	Magnetic Card All Track Read	
	CLEANING	'M'	'5'	'1'	MSRW Header Cleaning	
IC CARD	IC CONTROL	'I'	'2'	'1'	IC Card Reset	
		'I'	'2'	'2'	IC Card Direct Control	
RF CARD	RF READ / WRITE	'R'	'3'	'1'	RF Card Read in Block Range	
		'R'	'3'	'2'	RF Card Write in Block Range	
		'R'	'3'	'6'	Read RF card data in sector range	
		'R'	'3'	'7'	Write RF card data in sector range	
	BALANCE	'R'	'4'	'1'	Increases balance in RF card	
		'R'	'4'	'2'	Decreases balance in RF card	
	SECRET KEY CHANGE	'R'	'5'	'1'	Change 'Secret Key' to other Key	
		'R'	'5'	'2'	Change 'Secret Key' to all the same Key value	
		'R'	'5'	'3'	Select 'Secret Key Index'	
		'R'	'5'	'4'	Change RF Card 'Secret Key' to other key	
RF DETECT	'R'	'6'	'1'	Check RF card in antenna area		

Doc No	CIM-7XXX SPECIFICATION	REV	PAGE	DATE
		C	28 OF 63	2011. 03

◆ *Common*

These are the command set that all the CIM-7000 Series use. These commands include the terminal setting and the card movement related commands.

The 'STATUS' commands provide the function to check the current terminal status and the errors occurred during the command execution.

The 'SETTING' commands consist of commands for setting the terminal and these commands is easy to use because the same command can use for both setting and checking the terminal.

The 'MOVE' commands consist of commands used commonly like the card eject and capture command.

Commands Set:

	Item	Cm0	Cm1	Cm2	Detail	Note
COMMON	STATUS	'C'	'1'	'1'	Get Model	
		'C'	'1'	'2'	Get Firmware Version	
		'C'	'1'	'3'	Get Stacker	
		'C'	'1'	'4'	Get Status List	
		'C'	'1'	'5'	Get Error List	
		'C'	'1'	'6'	Get Card Position	
	SETTING_1	'C'	'2'	'1'	Set RTC IC	Check
		'C'	'2'	'4'	Set Retry Count	Check
		'C'	'2'	'5'	Set Buzz On/Off Cont.	Check
		'C'	'2'	'6'	Set Baud Rate	Check
	MOVE	'C'	'3'	'1'	Card Move From Stacker	
		'C'	'3'	'2'	Card Move To ...	
		'C'	'3'	'4'	Card Capture	Backward
		'C'	'3'	'6'	Card Eject (Drop Mode)	Forward
		'C'	'3'	'7'	Card Eject (Hold Mode)	Forward
	SETTING_2	C	'4'	'2'	Software Reset	

Doc No	CIM-7XXX SPECIFICATION	REV	PAGE	DATE
		C	29 OF 63	2011. 03

1 STATUS / SETTING

1.1 "C11" : It is to check out Model number of CIM-7000.

☞ Command Format

SOH	Null	Length	STX	"C11"	ETX	Bcc
-----	------	--------	-----	-------	-----	-----

☞ Positive Response Format

SOH	Null	Length	STX	"C11"	GOOD	0x01	DATA	ETX	Bcc
-----	------	--------	-----	-------	------	------	------	-----	-----

☞ Negative Response Format

SOH	Null	Length	STX	"C11"	E-Code	0x00	ETX	Bcc
-----	------	--------	-----	-------	--------	------	-----	-----

☞ Response Data Structure

Model No
30 Byte (ASCII)

1.2 "C12" : It is to check out Firmware Version of CIM-7000

☞ Command Format

SOH	Null	Length	STX	"C12"	ETX	Bcc
-----	------	--------	-----	-------	-----	-----

☞ Positive Response Format

SOH	Null	Length	STX	"C12"	GOOD	0x01	DATA	ETX	Bcc
-----	------	--------	-----	-------	------	------	------	-----	-----

☞ Negative Response Format

SOH	Null	Length	STX	"C12"	E-Code	0x00	ETX	Bcc
-----	------	--------	-----	-------	--------	------	-----	-----

☞ Response Data Structure

VERSION
30 Byte (ASCII)

1.3 "C13" : It is check out status of Stacker of CIM-7000

☞ Command Format

SOH	Null	Length	STX	"C13"	ETX	Bcc
-----	------	--------	-----	-------	-----	-----

☞ Positive Response Format

SOH	Null	Length	STX	"C13"	GOOD	0x01	DATA	ETX	Bcc
-----	------	--------	-----	-------	------	------	------	-----	-----

☞ Negative Response Format

SOH	Null	Length	STX	"C13"	E-Code	0x00	ETX	Bcc
-----	------	--------	-----	-------	--------	------	-----	-----

☞ Response Data Structure

Stacker 1	Stacker 2	Stacker 3	Stacker 4
1Byte (Hex)	1Byte (Hex)	1Byte (Hex)	1Byte (Hex)

Doc No	CIM-7XXX SPECIFICATION	REV	PAGE	DATE
		C	30 OF 63	2011. 03

☞ Data Variable

<Stacker1>

Code	Status
0x01	Stacker #1 Good
0x02	Stacker #1 Warning
0x03	Stacker #1 Empty

<Stacker2>

Code	Status
0x01	Stacker #2 Good
0x02	Stacker #2 Warning
0x03	Stacker #2 Empty

<Stacker3>

Code	Status
0x01	Stacker #1 Good
0x02	Stacker #1 Warning
0x03	Stacker #1 Empty

<Stacker4>

Code	Status
0x01	Stacker #2 Good
0x02	Stacker #2 Warning
0x03	Stacker #2 Empty

☞ Note

Stacker Status	Detail
'Stacker Good'	Too many cards loading ¹⁾
'Stacker Warning'	Too few cards loading ¹⁾
'Stacker Empty'	No cards in stacker

1) The stacker status is detected by the sensor behind the stacker. The number of cards can be changed.

1.4 "C14" : It is to check out current Status of CIM-7000

☞ Command Format

SOH	Null	Length	STX	"C14"	ETX	Bcc
-----	------	--------	-----	-------	-----	-----

☞ Positive Response Format

SOH	Null	HL	Length	"C14"	GOOD	0x01	DATA	ETX	Bcc
-----	------	----	--------	-------	------	------	------	-----	-----

☞ Negative Response Format

SOH	Null	Length	STX	"C14"	E-Code	0x00	ETX	Bcc
-----	------	--------	-----	-------	--------	------	-----	-----

☞ Response Data Structure

Error Code (1)	---	Error Code (N)
----------------	-----	----------------

High Byte	Low Byte
2Byte	

☞ Note

You can identify the stacker status, motor status, card status (jamming) and communication status through the Error Code in the response data structure.

Doc No	CIM-7XXX SPECIFICATION	REV	PAGE	DATE
		C	31 OF 63	2011. 03

1.5 “C15” : It is to check out error while Command is being executed.

☞ Command Format

SOH	Null	Length	STX	“C15”	ETX	Bcc
-----	------	--------	-----	-------	-----	-----

☞ Positive Response Format

SOH	Null	Length	STX	“C15”	GOOD	0x01	DATA	ETX	Bcc
-----	------	--------	-----	-------	------	------	------	-----	-----

☞ Negative Response Format

SOH	Null	Length	STX	“C15”	E-Code	0x00	ETX	Bcc
-----	------	--------	-----	-------	--------	------	-----	-----

☞ Response Data Structure

Error Time (1)	Error Code (1)	---	Error Time (N)	Error Code (N)
7Byte (BCD)	2Byte (Hex)	---	7Byte (BCD)	2Byte (Hex)

High Year	Low Year	Month	Day	Hour	Minute	Second
1Byte	1Byte	1Byte	1Byte	1Byte	1Byte	1Byte

High Byte	Low Byte
1Byte	1Byte

☞ Note

This command is only correspond to the error occurred during command execution. The time when an error is occurred is represented to the BCD, while the error code to the HEX.

1.5 “C16” : It is to check out current card position of CIM-7000

☞ Command Format

SOH	Null	Length	STX	“C16”	ETX	Bcc
-----	------	--------	-----	-------	-----	-----

☞ Positive Response Format

SOH	Null	Length	STX	“C16”	GOOD	0x01	DATA	ETX	Bcc
-----	------	--------	-----	-------	------	------	------	-----	-----

☞ Negative Response Format

SOH	Null	Length	STX	“C16”	E-Code	0x00	ETX	Bcc
-----	------	--------	-----	-------	--------	------	-----	-----

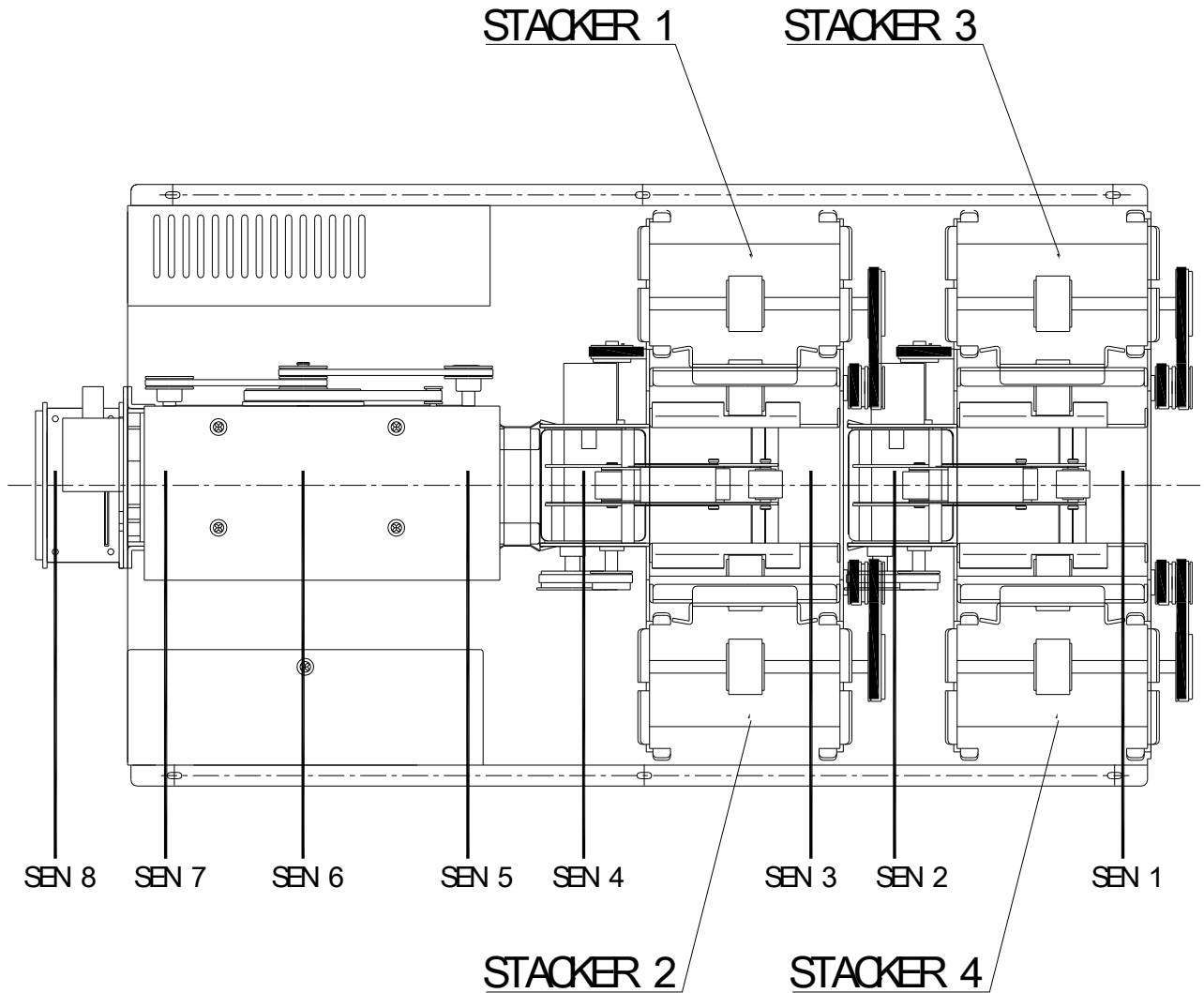
☞ Response Data Structure

Card Position
1Byte (Hex)

<Card Position> Refer to next page.

Number	Code	Sensor
1	0x01	SEN1
2	0x02	SEN2
3	0x04	SEN3
4	0x08	SEN4
5	0x10	SEN5
6	0x20	SEN6
7	0x40	SEN7
8	0x80	SEN8

Doc No	CIM-7XXX SPECIFICATION	REV	PAGE	DATE
		C	32 OF 63	2011. 03



Doc No	CIM-7XXX SPECIFICATION	REV	PAGE	DATE
		C	33 OF 63	2011. 03

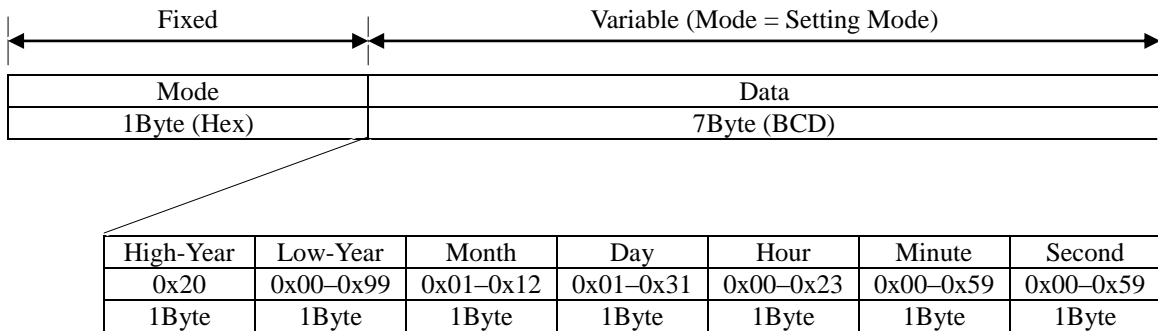
2 SETTING

2.1 “C21” : It is to set or to check ‘RTC IC’.

☞ Command Format

SOH	Null	Length	STX	“C21”	DATA	ETX	Bcc
-----	------	--------	-----	-------	------	-----	-----

☞ Command Data Structure



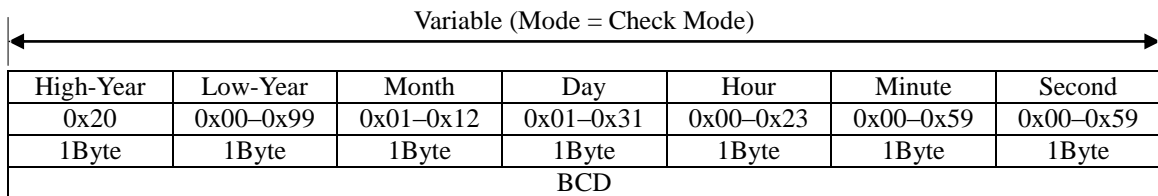
☞ Positive Response Format

SOH	Null	Length	STX	“C21”	GOOD	0x01	DATA	ETX	Bcc
-----	------	--------	-----	-------	------	------	------	-----	-----

☞ Negative Response Format

SOH	Null	Length	STX	“C21”	E-Code	0x00	ETX	Bcc
-----	------	--------	-----	-------	--------	------	-----	-----

☞ Response Data Structure



☞ Data Variable

<Mode>

Code	Mode	Detail
0x01	‘Setting Mode’	Set ‘RTC IC’
0x02	‘Check Mode’	Check ‘RTC IC’

☞ Note

‘Day’ is changeable due to the value of ‘Month’.

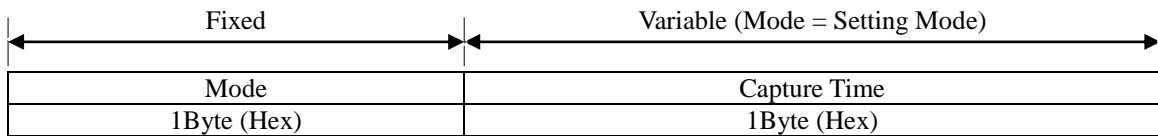
Doc No	CIM-7XXX SPECIFICATION	REV	PAGE	DATE
		C	34 OF 63	2011. 03

2.2 “C23” : It is to set or to check ‘Capture Time’.

☞ Command Format

SOH	Null	Length	STX	“C23”	DATA	ETX	Bcc
-----	------	--------	-----	-------	------	-----	-----

☞ Command Data Structure



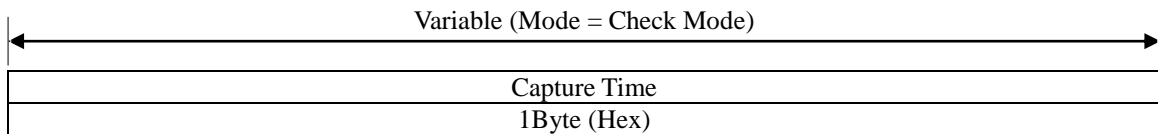
☞ Positive Response Format

SOH	Null	Length	STX	“C23”	GOOD	0x01	DATA	ETX	Bcc
-----	------	--------	-----	-------	------	------	------	-----	-----

☞ Negative Response Format

SOH	Null	Length	STX	“C23”	E-Code	0x00	ETX	Bcc
-----	------	--------	-----	-------	--------	------	-----	-----

☞ Response Data Structure



☞ Data Variable

<Mode>

Code	Mode	Detail
0x01	‘Setting Mode’	Set ‘Capture Time’
0x02	‘Check Mode’	Check ‘Capture Time’

<Capture Time>

Code	Setting	Detail	Note
0x00	NON	‘Capture Time’ not set	Default
0x01	10Sec	‘Capture Time’ to be set 10 seconds	
0x02	20Sec	‘Capture Time’ to be set 20 seconds	
0x03	30Sec	‘Capture Time’ to be set 30 seconds	
0x04	40Sec	‘Capture Time’ to be set 40 seconds	
0x05	50Sec	‘Capture Time’ to be set 50 seconds	
0x06	60Sec	‘Capture Time’ to be set 60 seconds	

☞ Note

‘Capture Time’ Function

In Hold mode, if user doesn’t pull out the card from the terminal in ‘Capture Time’ period, it gets back the card automatically.

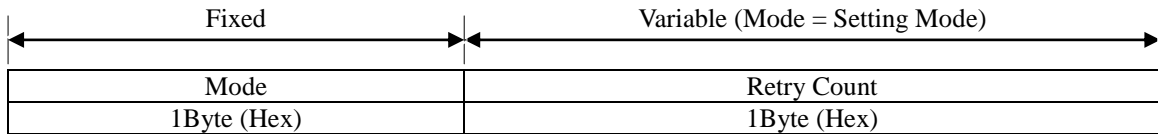
Doc No	CIM-7XXX SPECIFICATION	REV	PAGE	DATE
		C	35 OF 63	2011. 03

2.3 “C24” : It is to set or to check ‘Retry Count’.

☞ Command Format

SOH	Null	Length	STX	“C24”	DATA	ETX	Bcc
-----	------	--------	-----	-------	------	-----	-----

☞ Command Data Structure



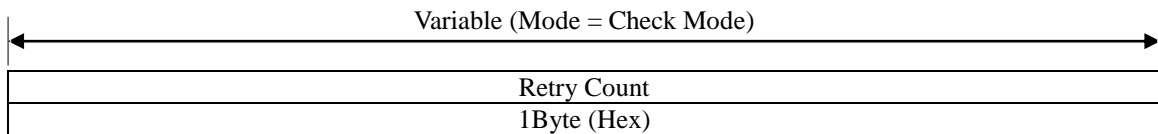
☞ Positive Response Format

SOH	Null	Length	STX	“C24”	GOOD	0x01	DATA	ETX	Bcc
-----	------	--------	-----	-------	------	------	------	-----	-----

☞ Negative Response Format

SOH	Null	Length	STX	“C24”	E-Code	0x00	ETX	Bcc
-----	------	--------	-----	-------	--------	------	-----	-----

☞ Response Data Structure



☞ Data Variable

<Mode>

Code	Mode	Detail
0x01	‘Setting Mode’	Set ‘Retry Count’
0x02	‘Check Mode’	Check ‘Retry Count’

<Retry Count>

Code	Setting	Detail	Note
0x00	NON	Do not retry	
0x01	Once	Execute the instruction again.	
0x02	Twice	Retry it twice	
0x03	Three times	Retry it three times	Default

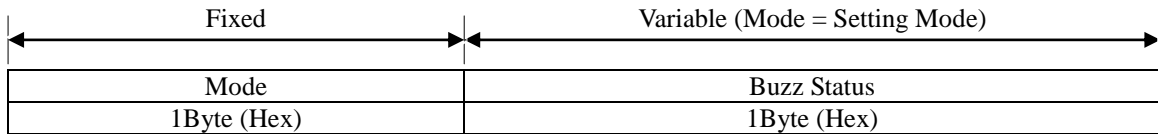
Doc No	CIM-7XXX SPECIFICATION	REV	PAGE	DATE
		C	36 OF 63	2011. 03

2.4 “C25” : It is to set or to check ‘Buzz Control’.

☞ Command Format

SOH	Null	Length	STX	“C25”	DATA	ETX	Bcc
-----	------	--------	-----	-------	------	-----	-----

☞ Command Data Structure



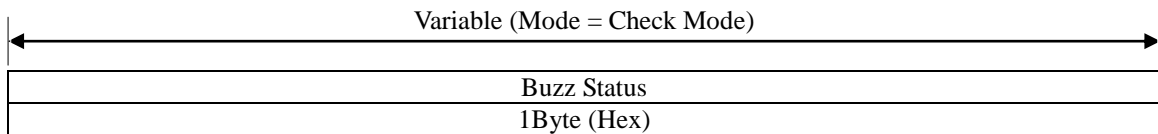
☞ Positive Response Format

SOH	Null	Length	STX	“C25”	GOOD	0x01	DATA	ETX	Bcc
-----	------	--------	-----	-------	------	------	------	-----	-----

☞ Negative Response Format

SOH	Null	Length	STX	“C25”	E-Code	0x00	ETX	Bcc
-----	------	--------	-----	-------	--------	------	-----	-----

☞ Response Data Structure



☞ Data Variable

<Mode>

Code	Mode	Detail
0x01	‘Setting Mode’	Set ‘Buzz Control’
0x02	‘Check Mode’	Check ‘Buzz Control’

<Buzz Status>

Code	Setting	Detail	Note
0x01	Buzz Off	Buzz Off	
0x02	Buzz On	Buzz On	Default

☞ Note

Doc No	CIM-7XXX SPECIFICATION	REV	PAGE	DATE
		C	37 OF 63	2011. 03

2.5 “C26” : It is to change ‘Baud Rate’.

☞ Command Format

SOH	Null	Length	STX	“C26”	DATA	ETX	Bcc
-----	------	--------	-----	-------	------	-----	-----

☞ Command Data Structure

Baud Rate
1Byte (Hex)

☞ Positive Response Format

SOH	Null	Length	STX	“C26”	GOOD	0x01	ETX	Bcc
-----	------	--------	-----	-------	------	------	-----	-----

☞ Negative Response Format

SOH	Null	Length	STX	“C26”	E-Code	0x00	ETX	Bcc
-----	------	--------	-----	-------	--------	------	-----	-----

☞ Response Data Structure

☞ Data Variable

<Baud Rate>

Code	Setting	Detail	Note
0x01	9600Bps	Set Baud Rate to be 9600Bps	
0x02	19200Bps	Set Baud Rate to be 19200Bps	
0x03	RFU		
0x04	38400Bps	Set Baud Rate to be 38400Bps	Default
0x05	57600Bps	Set Baud Rate to be 57600Bps	

2.6 “C42” : Software RESET for Main Board

☞ Command Format

SOH	Null	Length	STX	“C42”	ETX	Bcc
-----	------	--------	-----	-------	-----	-----

☞ Positive Response Format

SOH	Null	Length	STX	“C42”	GOOD	0x01	ETX	Bcc
-----	------	--------	-----	-------	------	------	-----	-----

☞ Negative Response Format

SOH	Null	Length	STX	“C42”	E-Code	0x00	ETX	Bcc
-----	------	--------	-----	-------	--------	------	-----	-----

☞ Note

This “C42” Software RESET command is effective for CIM7000 MAIN BOARD only.

Card Dispenser and Card Reader is not RESETed.

With this software RESET, all the data setted at CIM-5000 return to DEFAULT value.

After “RESET”, minimum 5 seconds is required before running to get secure operation.

Doc No	CIM-7XXX SPECIFICATION	REV	PAGE	DATE
		C	38 OF 63	2011. 03

2.7 “C48” : It is to select the Magnetic card type either High-co or Low – co Card.

☞ Command Format

SOH	Null	Length	STX	“C48”	DATA	ETX	Bcc
-----	------	--------	-----	-------	------	-----	-----

☞ Command Data Structure

Data
1 byte

☞ Positive Response Format

SOH	Null	Length	STX	“C48”	GOOD	0x01	ETX	Bcc
-----	------	--------	-----	-------	------	------	-----	-----

☞ Negative Response Format

SOH	Null	Length	STX	“C48”	E-Code	0x00	ETX	Bcc
-----	------	--------	-----	-------	--------	------	-----	-----

☞ Data Variable

<Mode>

Code	Mode	Detail
0x30	Low-co card	It is to select Low-co type.
0x33	High-co card	It is to select High-co type.

Doc No	CIM-7XXX SPECIFICATION	REV	PAGE	DATE
		C	39 OF 63	2011. 03

3 MOVE

3.1 “C31” : It is to take a card from Stacker and to move it to Card Reader / Writer Module.

☞ Command Format

SOH	Null	Length	STX	“C31”	DATA	ETX	Bcc
-----	------	--------	-----	-------	------	-----	-----

☞ Command Data Structure

Stacker	Module
1Byte (Hex)	1Byte (Hex)

☞ Positive Response Format

SOH	Null	Length	STX	“C31”	GOOD	0x01	ETX	Bcc
-----	------	--------	-----	-------	------	------	-----	-----

☞ Negative Response Format

SOH	Null	Length	STX	“C31”	E-Code	0x00	ETX	Bcc
-----	------	--------	-----	-------	--------	------	-----	-----

☞ Data Variable

<Stacker>

Code	Setting	Detail
0x01	Stacker 1	Select Stacker 1
0x02	Stacker 2	Select Stacker 2
0x03	RFU	
0x04	Stacker 3	Select Stacker 3
0x05	Stacker 4	Select Stacker 4

<Module>

Code	Setting	Detail
0x01	MSRW	Card transport to MSRW Module
0x02	IC	Card transport to IC Module
0x03	RF	Card transport to RF Module

3.2 “C32” : It is take card to Card Reader / Writer Module

☞ Command Format

SOH	Null	Length	STX	“C32”	DATA	ETX	Bcc
-----	------	--------	-----	-------	------	-----	-----

☞ Command Data Structure

Module
1Byte (Hex)

☞ Positive Response Format

SOH	Null	Length	STX	“C32”	GOOD	0x01	DATA	ETX	Bcc
-----	------	--------	-----	-------	------	------	------	-----	-----

☞ Negative Response Format

SOH	Null	Length	STX	“C32”	E-Code	0x00	ETX	Bcc
-----	------	--------	-----	-------	--------	------	-----	-----

☞ Data Variable

<Module>

Code	Setting	Detail
0x01	MSRW	Card transport to MSRW Module
0x02	IC	Card transport to IC Module
0x03	RF	Card transport to RF Module

Doc No	CIM-7XXX SPECIFICATION	REV	PAGE	DATE
		C	40 OF 63	2011. 03

3.3 “C34” : It takes card to Bin Box (Capture)

☞ Command Format

SOH	Null	Length	STX	“C34”	ETX	Bcc
-----	------	--------	-----	-------	-----	-----

☞ Positive Response Format

SOH	Null	Length	STX	“C34”	GOOD	0x01	ETX	Bcc
-----	------	--------	-----	-------	------	------	-----	-----

☞ Negative Response Format

SOH	Null	Length	STX	“C34”	E-Code	0x00	ETX	Bcc
-----	------	--------	-----	-------	--------	------	-----	-----

☞ Details

Capture card is stored in Bin Box in the back of CIM-6X0. If the Box is full, it causes an error.

3.4 “C36” : Dispense the card to front and Drop it out of the unit.

☞ Command Format

SOH	Null	Length	STX	“C36”	ETX	Bcc
-----	------	--------	-----	-------	-----	-----

☞ Positive Response Format

SOH	Null	Length	STX	“C36”	GOOD	0x01	ETX	Bcc
-----	------	--------	-----	-------	------	------	-----	-----

☞ Negative Response Format

SOH	Null	Length	STX	“C36”	E-Code	0x00	ETX	Bcc
-----	------	--------	-----	-------	--------	------	-----	-----

☞ Note

The CIM-7xxx model with bezel or shutter can not use “C36” command.

3.5 “C37” : Dispense the card to front and hold it at the exit roller of the unit.

☞ Command Format

SOH	Null	Length	STX	“C37”	ETX	Bcc
-----	------	--------	-----	-------	-----	-----

☞ Positive Response Format

SOH	Null	Length	STX	“C37”	GOOD	0x01	ETX	Bcc
-----	------	--------	-----	-------	------	------	-----	-----

☞ Negative Response Format

SOH	Null	Length	STX	“C37”	E-Code	0x00	ETX	Bcc
-----	------	--------	-----	-------	--------	------	-----	-----

Doc No	CIM-7XXX SPECIFICATION	REV	PAGE	DATE
		C	41 OF 63	2011. 03

◆ *MAGNETIC CARD*

This section describes the commands that can use at the magnetic card.

The data to be written in every track should be conformed to the ISO7816-2 standard. The available character is as follows. For more information about Magnetic card, refer to the ISO7816-2 standard.

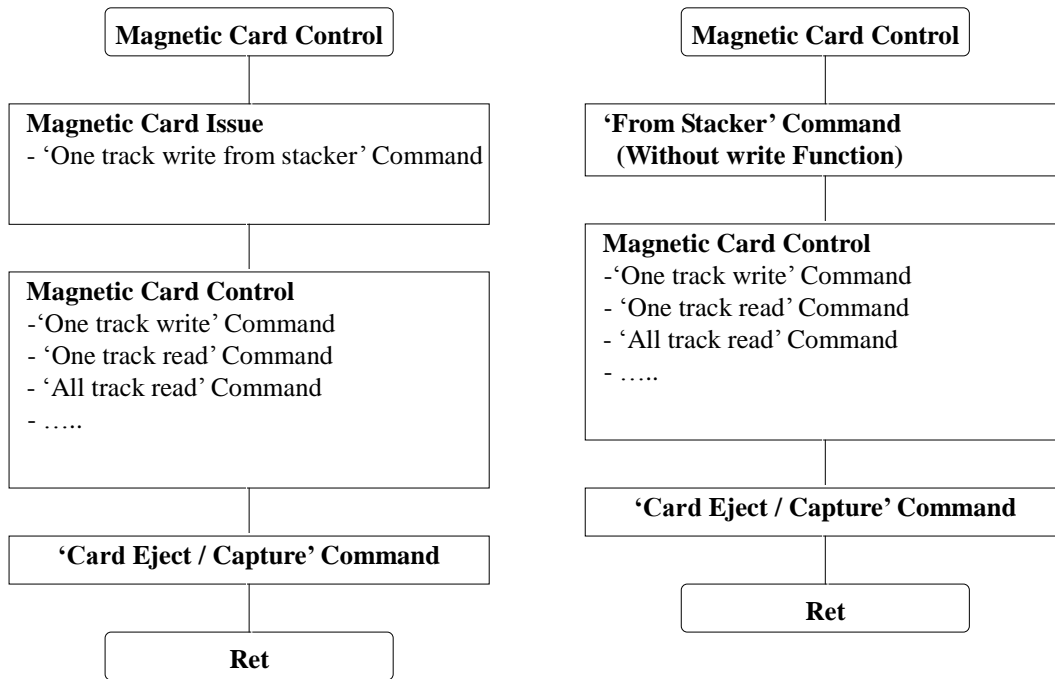
Track	Available Character Set	Maximum characters	비 고
Track #1	Character, Numbers	76	Except for the special character
Track #2	Numbers	37	
Track #3	Number	104	

The CIM-1000 provides two features for speedy processing. The first is to provide the command combined with 'FromStacker' and 'Magnetic Write' command. This feature enables to write on card in the dispenser stacker at a command.

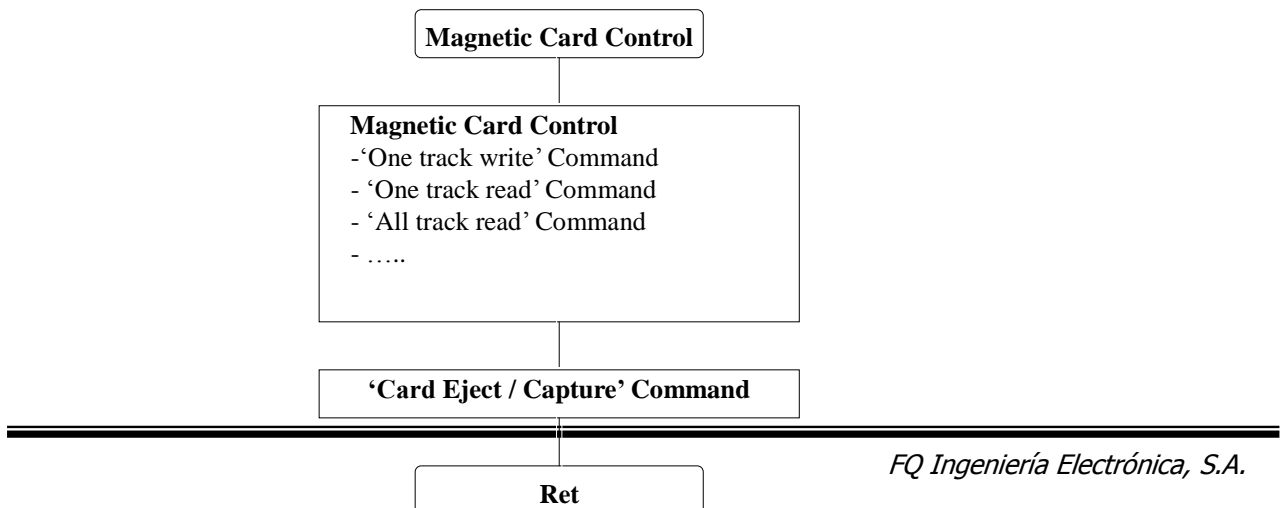
The second is to lessen the processing time for the 'magnetic read' command repeated after latching the data read from card. To latch data occurs at a point of time when verify in the magnetic write command and execute the magnetic read command. However, the latched data is erased when the card is off from the terminal.

Doc No	CIM-7XXX SPECIFICATION	REV	PAGE	DATE
		C	42 OF 63	2011. 03

Basic Magnetic Card Operations:



Magnetic Card Operations in the stacker



Magnetic Card Operations in the terminal

Doc No	CIM-7XXX SPECIFICATION	REV	PAGE	DATE
		C	43 OF 63	2011. 03

1 MAGNETIC READ / WRITE

1.1 “M31” : It is to read data on track chosen.

☞ Command Format

SOH	Null	Length	STX	“M31”	DATA	ETX	Bcc
-----	------	--------	-----	-------	------	-----	-----

☞ Command Data Structure

Track (1Byte)

☞ Positive Response Format

SOH	Null	Length	STX	“M31”	GOOD	0x01	DATA	ETX	Bcc
-----	------	--------	-----	-------	------	------	------	-----	-----

☞ Negative Response Format

SOH	Null	Length	STX	“M31”	E-Code	0x00	ETX	Bcc
-----	------	--------	-----	-------	--------	------	-----	-----

☞ Response Data Structure

Read Data (ASCII Code)

☞ Data Variable

<Track>

Code	Setting	Detail
0x01	Track 1	Read data on Track 1
0x02	Track 2	Read data on Track 2
0x03	Track 3	Read data on Track 3

☞ Note

If the ‘Magnetic Read’ command is executed normally, the read data is latched.

1.2 “M33” : It is to write data on track chosen.

☞ Command Format

SOH	Null	Length	STX	“M33”	DATA	ETX	Bcc
-----	------	--------	-----	-------	------	-----	-----

☞ Command Data Structure

Track 1Byte (Hex)	Write Data (ASCII Code)
----------------------	----------------------------

☞ Positive Response Format

SOH	Null	Length	STX	“M33”	GOOD	0x01	ETX	Bcc
-----	------	--------	-----	-------	------	------	-----	-----

☞ Negative Response Format

SOH	Null	Length	STX	“M33”	E-Code	0x00	ETX	Bcc
-----	------	--------	-----	-------	--------	------	-----	-----

☞ Data Variable

<Track>

Code	Setting	Detail
0x01	Track 1	Write data to Track 1
0x02	Track 2	Write data to Track 2
0x03	Track 3	Write data to Track 3

☞ Note

If the ‘Magnetic Write’ command is executed normally, the written data is latched. This command has the ‘Verify’ feature.

Doc No	CIM-7XXX SPECIFICATION	REV	PAGE	DATE
		C	44 OF 63	2011. 03

1.3 “M34” : It is to take a card from Stacker and to write data to a selected track.

☞ Command Format

SOH	Null	Length	STX	“M34”	DATA	ETX	Bcc
-----	------	--------	-----	-------	------	-----	-----

☞ Command Data Structure

Stacker	Track	Write Data
1Byte (Hex)	1Byte (Hex)	(ASCII Code)

☞ Positive Response Format

SOH	Null	Length	STX	“M34”	GOOD	0x01	ETX	Bcc
-----	------	--------	-----	-------	------	------	-----	-----

☞ Negative Response Format

SOH	Null	Length	STX	“M34”	E-Code	0x00	ETX	Bcc
-----	------	--------	-----	-------	--------	------	-----	-----

☞ Data Variable

<Stacker>

Code	Setting	Detail
0x01	Stacker 1	Select Stacker 1
0x02	Stacker 2	Select Stacker 2
0x03	RFU	
0x04	Stacker 3	Select Stacker 3
0x05	Stacker 4	Select Stacker 4

<Track>

Code	Setting	Detail
0x01	Track 1	Write data to Track 1
0x02	Track 2	Write data to Track 2
0x03	Track 3	Write data to Track 3

☞ Note

This command has the Data ‘Latch ‘and ‘Verify’ features.

1.4 “M35” : It is to read data from all three tracks.

☞ Command Format

SOH	Null	Length	STX	“M35”	ETX	Bcc
-----	------	--------	-----	-------	-----	-----

☞ Positive Response Format

SOH	Null	Length	STX	“M35”	GOOD	0x01	DATA	ETX	Bcc
-----	------	--------	-----	-------	------	------	------	-----	-----

☞ Negative Response Format

SOH	Null	Length	STX	“M35”	E-Code	0x00	ETX	Bcc
-----	------	--------	-----	-------	--------	------	-----	-----

☞ Response Data Structure

Track1 Data	0x00	Track2 Data	0x00	Track3 Data
(ASCII)	1Byte (Hex)	(ASCII)	1Byte (Hex)	(ASCII)

☞ Note

If the ‘Magnetic Read’ command is executed normally, the read data is latched.

Doc No	CIM-7XXX SPECIFICATION	REV	PAGE	DATE
		C	45 OF 63	2011. 03

2 CLEANING

2.1 “M51” : It is to clean Magnetic Head mounted inside MSRW.

☞ Command Format

SOH	Null	Length	STX	“M51”	ETX	Bcc
-----	------	--------	-----	-------	-----	-----

☞ Positive Response Format

SOH	Null	Length	STX	“M51”	GOOD	0x01	ETX	Bcc
-----	------	--------	-----	-------	------	------	-----	-----

☞ Negative Response Format

SOH	Null	Length	STX	“M51”	E-Code	0x00	ETX	Bcc
-----	------	--------	-----	-------	--------	------	-----	-----

◆ IC CARD

This section describes the commands that can use at the IC card and Memory card.

The IC card should conform to the ISO7816-4 T=0 and T=1 , these cards is available

The applicable models in the CIM7000 Series are the CIM720, CIM740, CIM750, CIM770, and the available commands are as follows.

Item	Cm0	Cm1	Cm2	Detail	Note
IC CONTROL	‘1’	‘2’	‘1’	IC Card Reset	
	‘1’	‘2’	‘2’	IC Card Direct Control	

Doc No	CIM-7XXX SPECIFICATION	REV	PAGE	DATE
		C	46 OF 63	2011. 03

1 IC CONTROL

1.1 "I21" : Reset the IC card and receive the ATR from card.

☞ Command Format

SOH	Null	Length	STX	"I21"	ETX	Bcc
-----	------	--------	-----	-------	-----	-----

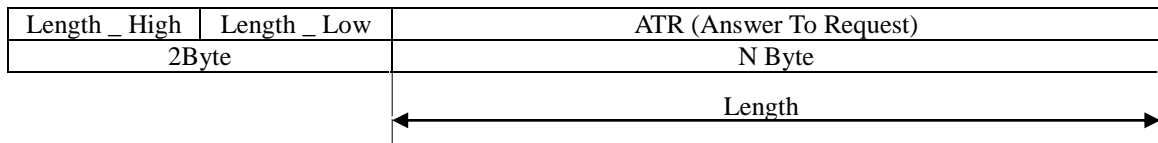
☞ Positive Response Format

SOH	Null	Length	STX	"I21"	GOOD	0x01	DATA	ETX	Bcc
-----	------	--------	-----	-------	------	------	------	-----	-----

☞ Negative Response Format

SOH	Null	Length	STX	"I21"	E-Code	0x00	ETX	Bcc
-----	------	--------	-----	-------	--------	------	-----	-----

☞ Response Data Structure



☞ Example

SAMSUNG SCOS ATR

High 8Byte	0x3B	0x6B	0x00	0x00	0x80	0x31	0x80	0x63
Low 7Byte	0x53	0x46	0x01	0x83	0x03	0x90	0x00	

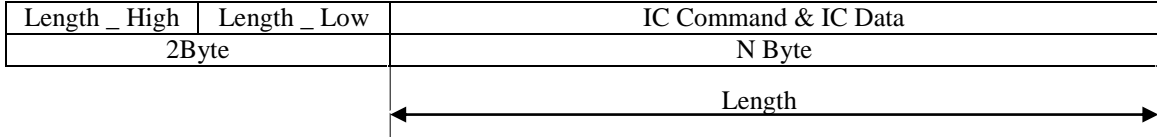
Doc No	CIM-7XXX SPECIFICATION	REV	PAGE	DATE
		C	47 OF 63	2011. 03

1.2 “I22” : Control the card conforming to the ISO 7816 T = 0 and T =1 , ISO 7816 – 4 standard directly.

☞ Command Format

SOH	Null	Length	STX	“I22”	DATA	ETX	Bcc
-----	------	--------	-----	-------	------	-----	-----

☞ Command Data Structure



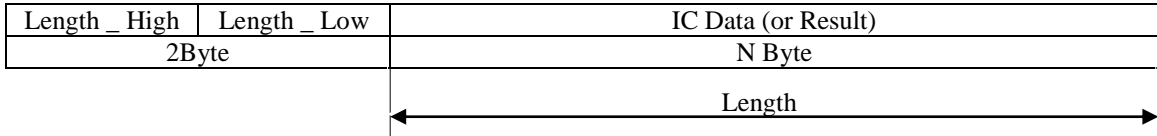
☞ Positive Response Format

SOH	Null	Length	STX	“I22”	GOOD	0x01	DATA	ETX	Bcc
-----	------	--------	-----	-------	------	------	------	-----	-----

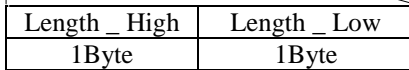
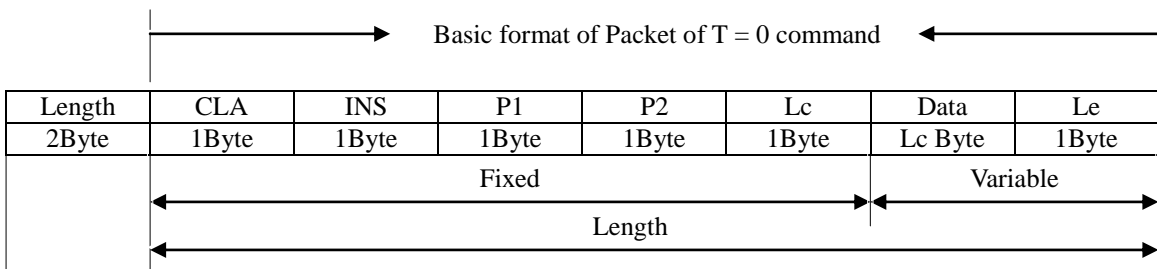
☞ Negative Response Format

SOH	Null	Length	STX	“I22”	E-Code	0x00	ETX	Bcc
-----	------	--------	-----	-------	--------	------	-----	-----

☞ Response Data Structure



☞ IC Command & IC Data Structure



CLA	Class	Note
INS	Instruction	
P1	Offset(High Value)	
P2	Offset(Low Value)	
Lc	A number of data to transfer	Max Value : 255
Data	Data to Transfer	
Le	A number of data to receive	

Doc No	CIM-7XXX SPECIFICATION	REV	PAGE	DATE
		C	48 OF 63	2011. 03

☞ Format of T = 0 Command

Command	INS Code (Hex Value)
Read Binary Command	B0
Write Binary Command	D0
Update Binary Command	D6
Erase Binary Command	0E
Read Record(s) Command	B2
Write Record Command	D2
Append Record Command	E2
Update Record Command	DC
Get Data Command	CA
Put Data Command	DA
Select File Command	A4
Verify Command	20
Internal Authenticate Command	88
External Authenticate Command	82
Get Challenge Command	84
Manage Channel Command	70

For more information, refer to the ISO 7816 – 4 standard.

Doc No	CIM-7XXX SPECIFICATION	REV	PAGE	DATE
		C	49 OF 63	2011. 03

◆ *RF CARD*

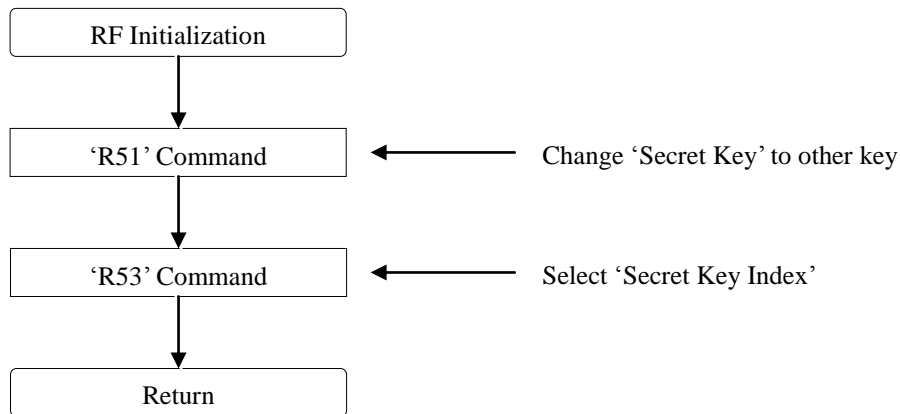
This section describes the commands that can use at the 'RF CARD'.

The RF Module of his model supports only the MIFARE card.

Item	Cm0	Cm1	Cm2	Detail	Note
RF READ / WRITE	'R'	'3'	'1'	RF Card Read in Block Range	
	'R'	'3'	'2'	RF Card Write in Block Range	
	'R'	'3'	'6'	Read RF card data in sector range	
	'R'	'3'	'7'	Write RF card data in sector range	
BALANCE	'R'	'4'	'1'	Increases balance in RF card	
	'R'	'4'	'2'	Decreases balance in RF card	
SECRET KEY CHANGE	'R'	'5'	'1'	Change 'Secret Key' to other Key	
	'R'	'5'	'2'	Change 'Secret Key' to all the same Key value	
	'R'	'5'	'3'	Select 'Secret Key Index'	
	'R'	'5'	'4'	Change RF Card 'Secret Key' to other key	
RF DETECT	'R'	'6'	'1'	Check RF card in antenna area	

To use the RF card, you need to initialize at first.

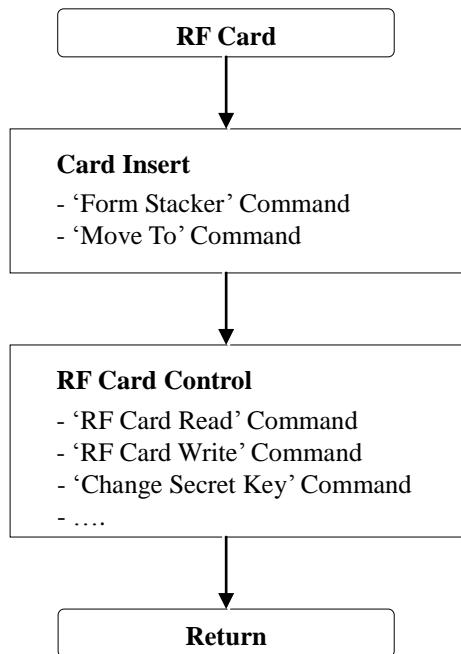
- Setting and updating of the secret key and secret key index.



RF Module Initialization

Doc No	CIM-7XXX SPECIFICATION	REV	PAGE	DATE
		C	50 OF 63	2011. 03

Basic Operating Procedure of the RF card:



RF Card Basic Operating Procedures

Memory Architecture (map) of the RF card: 8Kbit

Sector	Block	Size	Detail	Note	
Sector 0	Block 0	16Byte	RF Card Information	Can't use	
	Block 1	16Byte			
	Block 2	16Byte	'Sector Key'		
	Block 3	16Byte			
Sector 1	Block 0	16Byte	User Available Memory		
	Block 1	16Byte			
	Block 2	16Byte	'Sector Key'		Can't use
	Block 3	16Byte			
Sector 2	Block 0	16Byte	User Available Memory		
	Block 1	16Byte			
	Block 2	16Byte	'Sector Key'		Can't use
	Block 3	16Byte			
---	---	---	---	---	
Sector 15	Block 0	16Byte	User Available Memory		
	Block 1	16Byte			
	Block 2	16Byte	'Sector Key'		Can't use
	Block 3	16Byte			

Doc No	CIM-7XXX SPECIFICATION	REV	PAGE	DATE
		C	51 OF 63	2011. 03

1 RF CARD READ / WRITE

1.1 "R31" : Read RF card data & Secret Key in block range

☞ Command Format

SOH	Null	Length	STX	"R31"	DATA	ETX	Bcc
-----	------	--------	-----	-------	------	-----	-----

☞ Command Data Structure

Sector	Block
0x00 – 0x0f	0x00 – 0x03
1Byte (Hex)	1Byte (Hex)

☞ Positive Response Format

SOH	Null	Length	STX	"R31"	GOOD	0x01	DATA	ETX	Bcc
-----	------	--------	-----	-------	------	------	------	-----	-----

☞ Negative Response Format

SOH	Null	Length	STX	"R31"	E-Code	0x00	ETX	Bcc
-----	------	--------	-----	-------	--------	------	-----	-----

☞ Response Data Structure

Sector	Block	Read Data
1Byte (Hex)	1Byte (Hex)	16 Byte (Hex)

D0	D1	D2	---	D14	D15
1Byte	1Byte	1Byte	---	1Byte	1Byte

1.2 "R32" : Write RF card data in block range

☞ Command Format

SOH	Null	Length	STX	"R32"	DATA	ETX	Bcc
-----	------	--------	-----	-------	------	-----	-----

☞ Command Data Structure

Sector	Block	Write Data
0x00 – 0x0f	0x00 – 0x02	0x00 – 0xff
1Byte (Hex)	1Byte (Hex)	16Byte (Hex)

D0	D1	D2	---	D14	D15
1Byte	1Byte	1Byte	---	1Byte	1Byte

☞ Positive Response Format

SOH	Null	Length	STX	"R32"	GOOD	0x01	ETX	Bcc
-----	------	--------	-----	-------	------	------	-----	-----

☞ Negative Response Format

SOH	Null	Length	STX	"R32"	E-Code	0x00	ETX	Bcc
-----	------	--------	-----	-------	--------	------	-----	-----

Doc No	CIM-7XXX SPECIFICATION	REV	PAGE	DATE
		C	52 OF 63	2011. 03

1.5 “R36” : Read RF card data in sector range

☞ Command Format

SOH	Null	Length	STX	“R36”	DATA	ETX	Bcc
-----	------	--------	-----	-------	------	-----	-----

☞ Command Data Structure

Sector
0x00 – 0x0f
1Byte (Hex)

☞ Positive Response Format

SOH	Null	Length	STX	“R36”	GOOD	0x01	DATA	ETX	Bcc
-----	------	--------	-----	-------	------	------	------	-----	-----

☞ Negative Response Format

SOH	Null	Length	STX	“R36”	E-Code	0x00	ETX	Bcc
-----	------	--------	-----	-------	--------	------	-----	-----

☞ Response Data Structure

Sector	0x00	Read Data (Block#0)	0x01	Read Data (Block#1)	0x02	Read Data (Block#2)
1Byte (Hex)	1Byte (Hex)	16Byte	1Byte (Hex)	16Byte	1Byte (Hex)	16Byte

D0	D1	D2	---	D14	D15
1Byte	1Byte	1Byte	---	1Byte	1Byte

1.6 “R37” : Write RF card data in sector range (except Sector 0)

☞ Command Format

SOH	Null	Length	STX	“R37”	DATA	ETX	Bcc
-----	------	--------	-----	-------	------	-----	-----

☞ Command Data Structure

Sector	Write Data
0x01 – 0x0f	0x00 – 0xff
1Byte (Hex)	51Byte (Hex)

0x00	Write Data (Block#0)	0x01	Write Data (Block#1)	0x02	Write Data (Block#2)
1Byte (Hex)	16Byte (Hex)	1Byte (Hex)	16Byte (Hex)	1Byte (Hex)	16Byte (Hex)

D0	D1	D2	---	D14	D15
1Byte	1Byte	1Byte	---	1Byte	1Byte

☞ Positive Response Format

SOH	Null	Length	STX	“R37”	GOOD	0x01	ETX	Bcc
-----	------	--------	-----	-------	------	------	-----	-----

☞ Negative Response Format

SOH	Null	Length	STX	“R37”	E-Code	0x00	ETX	Bcc
-----	------	--------	-----	-------	--------	------	-----	-----

Doc No	CIM-7XXX SPECIFICATION	REV	PAGE	DATE
		C	53 OF 63	2011. 03

2 BALANCE

2.1 “R41” : Increment the balance of card to the specified amount.

☞ Command Format

SOH	Null	Length	STX	“R41”	DATA	ETX	Bcc
-----	------	--------	-----	-------	------	-----	-----

☞ Command Data Structure

Sector	Block	Index Value
0x00 – 0x0f	0x00 – 0x02	0x00000000 – 0xffffffff
1Byte (Hex)	1Byte (Hex)	4Byte (Hex)

V0	V1	V2	V3
0x00-0xff	0x00-0xff	0x00-0xff	0x00-0xff
1Byte(Hex, LSB)	1Byte(Hex)	1Byte(Hex)	1Byte(Hex, MSB)

☞ Positive Response Format

SOH	Null	Length	STX	“R41”	GOOD	0x01	ETX	Bcc
-----	------	--------	-----	-------	------	------	-----	-----

☞ Negative Response Format

SOH	Null	Length	STX	“R41”	E-Code	0x00	ETX	Bcc
-----	------	--------	-----	-------	--------	------	-----	-----

☞ Note

The balance should be written in the Electronic Purse format in the card.

2.1 “R42” : Decrement the balance of card to the specified amount..

☞ Command Format

SOH	Null	Length	STX	“R42”	DATA	ETX	Bcc
-----	------	--------	-----	-------	------	-----	-----

☞ Command Data Structure

Sector	Block	Index Value
0x00 – 0x0f	0x00 – 0x02	0x00000000 – 0xffffffff
1Byte (Hex)	1Byte (Hex)	4Byte (Hex)

V0	V1	V2	V3
0x00-0xff	0x00-0xff	0x00-0xff	0x00-0xff
1Byte(Hex, LSB)	1Byte(Hex)	1Byte(Hex)	1Byte(Hex, MSB)

☞ Positive Response Format

SOH	Null	Length	STX	“R42”	GOOD	0x01	ETX	Bcc
-----	------	--------	-----	-------	------	------	-----	-----

☞ Negative Response Format

SOH	Null	Length	STX	“R42”	E-Code	0x00	ETX	Bcc
-----	------	--------	-----	-------	--------	------	-----	-----

☞ Note

The balance should be written in the Electronic Purse format in the card.

Doc No	CIM-7XXX SPECIFICATION	REV	PAGE	DATE
		C	54 OF 63	2011. 03

3 SECRET KEY

3.1 "R51" : Change 'Secret Key' to a new key

☞ Command Format

SOH	Null	Length	STX	"R51"	DATA	ETX	Bcc
-----	------	--------	-----	-------	------	-----	-----

☞ Command Data Structure

Sector	KEY A	KEY B
0x00 – 0x0f	0x00 – 0xff	0x00 – 0xff
1Byte (Hex)	6Byte (Hex)	6Byte (Hex)

☞ Positive Response Format

SOH	Null	Length	STX	"R51"	GOOD	0x01	ETX	Bcc
-----	------	--------	-----	-------	------	------	-----	-----

☞ Negative Response Format

SOH	Null	Length	STX	"R51"	E-Code	0x00	ETX	Bcc
-----	------	--------	-----	-------	--------	------	-----	-----

☞ Note

KEY A : FFFFFFFFFF

KEY B : FFFFFFFFFF

3.2 "R52" : Change 'Secret Key' to all the same key value

☞ Command Format

SOH	Null	Length	STX	"R52"	DATA	ETX	Bcc
-----	------	--------	-----	-------	------	-----	-----

☞ Command Data Structure

KEY A	KEY B
0x00 – 0xff	0x00 – 0xff
6Byte (Hex)	6Byte (Hex)

☞ Positive Response Format

SOH	Null	Length	STX	"R52"	GOOD	0x01	ETX	Bcc
-----	------	--------	-----	-------	------	------	-----	-----

☞ Negative Response Format

SOH	Null	Length	STX	"R52"	E-Code	0x00	ETX	Bcc
-----	------	--------	-----	-------	--------	------	-----	-----

☞ Note

KEY A : FFFFFFFFFF

KEY B : FFFFFFFFFF

Doc No	CIM-7XXX SPECIFICATION	REV	PAGE	DATE
		C	55 OF 63	2011. 03

3.3 “R53” : Select ‘Secret Key Index’

☞ Command Format

SOH	Null	Length	STX	“R53”	DATA	ETX	Bcc
-----	------	--------	-----	-------	------	-----	-----

☞ Command Data Structure

Index
0x01 – 0x02
1Byte (Hex)

☞ Positive Response Format

SOH	Null	Length	STX	“R53”	GOOD	0x01	ETX	Bcc
-----	------	--------	-----	-------	------	------	-----	-----

☞ Negative Response Format

SOH	Null	Length	STX	“R53”	E-Code	0x00	ETX	Bcc
-----	------	--------	-----	-------	--------	------	-----	-----

☞ Data Variable

<Index>

Code	Setting	Detail
0x01	KEY A	Select ‘Secret Key A’
0x02	KEY B	Select ‘Secret Key B’

3.4 “R54” : Change RF card ‘Secret Key’ to other key

☞ Command Format

SOH	Null	Length	STX	“R54”	DATA	ETX	Bcc
-----	------	--------	-----	-------	------	-----	-----

☞ Command Data Structure

Sector	KEY A	Access	KEY B
0x00 – 0x0f	0x00 – 0xff	0x00 – 0xff	0x00 – 0xff
1Byte (Hex)	6Byte (Hex)	4Byte (Hex)	6Byte (Hex)

☞ Positive Response Format

SOH	Null	Length	STX	“R54”	GOOD	0x01	ETX	Bcc
-----	------	--------	-----	-------	------	------	-----	-----

☞ Negative Response Format

SOH	Null	Length	STX	“R54”	E-Code	0x00	ETX	Bcc
-----	------	--------	-----	-------	--------	------	-----	-----

☞ Warning

If you use this command incorrectly, it couldn't be authenticated from the card.

Doc No	CIM-7XXX SPECIFICATION	REV	PAGE	DATE
		C	56 OF 63	2011. 03

4 RF DETECT

4.1 "R61" : RF card detect in antenna area

☞ Command Format

SOH	Null	Length	STX	"R61"	ETX	Bcc
-----	------	--------	-----	-------	-----	-----

☞ Positive Response Format

SOH	Null	Length	STX	"R61"	GOOD	DATA	0x01	ETX	Bcc
-----	------	--------	-----	-------	------	------	------	-----	-----

☞ Negative Response Format

SOH	Null	Length	STX	"R61"	E-Code	0x00	ETX	Bcc
-----	------	--------	-----	-------	--------	------	-----	-----

☞ Response Data Structure

Serial Number
Hex Code
4Byte

☞ Note

If the RF card is detected, this command send the serial number to host. But, it doesn't authenticate the Secret Key of the RF card.

Doc No	CIM-7XXX SPECIFICATION	REV	PAGE	DATE
		C	57 OF 63	2011. 03

ERROR DETAIL

<GOOD>

Code : 0x0000

Description: Normal Execution

Procedures: None

<NOT_DEFINE_COMMAND>

Code : 0x2001

Description : Using the command that does not defined in this model.

Action : Use the valid command in this model.

<NOT_USE_COMMAND>

Code : 0x2002

Description : Not available command in this model.

Action : Use the valid command in this model.

<COMM_FRAME_ERROR>

Code : 0x2003

Description : Sending the command that has the invalid communication frame.

Action : Check the data format and the corresponding module specification.

<CARD_JAM>

Code : 0x2004

Description : When the card is jammed.

Action : Remove the jammed card.

<NO_CARD>

Code : 0x2005

Description : No cards.

Action : Insert the card.

Doc No	CIM-7XXX SPECIFICATION	REV	PAGE	DATE
		C	58 OF 63	2011. 03

<CARD_PRESENT>

Code : 0x2006

Description : When the card exists already in the terminal.

Action : Eject the card.

<BUSY>

Code : 0x2007

Description : When the terminal is running or busy.

Action : Wait until the previous operation is completed.

<RTC_ERROR>

Code : 0x2008

Description : When the RTC chip is broken.

Action : Replace the board.

<TWO_CARD_ERROR>

Code : 0x2009

Description : When more than one card is presented in the feeder part.

Action : Remove one card.

<DISPENSER_ERROR>

Code : 0x2100

Description : Not Applicable Dispenser.

Action : Reset the terminal and exchange the dispenser..

<DISPENSER_COMM_ERROR>

Code : 0x2101

Description : Dispenser communication error

Action : Check the communication line and reset the terminal.

<STACKER1_ERROR>

Code : 0x2102

Description : The first STACKER ERROR

Action : Be sure that the card is loaded at the first stacker.

Doc No	CIM-7XXX SPECIFICATION	REV	PAGE	DATE
		C	59 OF 63	2011. 03

<STACKER2_ERROR>

Code : 0x2103

Description: The second STACKER ERROR

Action : Be sure that the card is loaded at the second stacker.

<STACKER1_EMPTY>

Code : 0x2105

Description : No card at the first stacker.

Action : Load the card at the first stacker.

<STACKER2_EMPTY>

Code : 0x2106

Description : No card at the second stacker.

Action : Load the card at the second stacker.

<STACKER1_WARNING>

Code : 0x2107

Description : Too few cards in the first stacker.

Action : Load the card at the first stacker.

<STACKER2_WARNING>

Code : 0x2108

Description : Too few cards in the second stacker.

Action : Load the card at the second stacker.

<ERROR_BIN_FULL>

Code : 0x2109

Description : Too many cards in the 'CAPTURE BOX'.

Action : Keep the capture box empty.

<STACKER3_EMPTY>

Code : 0x210a

Description : No card at the third stacker.

Action : Load the card at the third stacker.

Doc No	CIM-7XXX SPECIFICATION	REV	PAGE	DATE
		C	60 OF 63	2011. 03

<STACKER4_EMPTY>

Code : 0x210b

Description : No card at the fourth stacker.

Action : Load the card at the fourth stacker.

<STACKER3_WARNING>

Code : 0x210c

Description : Too few cards in the third stacker.

Action : Load the card at the third stacker.

<STACKER2_WARNING>

Code : 0x210d

Description : Too few cards in the fourth stacker.

Action : Load the card at the fourth stacker.

<MSRW_ERROR>

Code : 0x2200

Description : The MS Reader/Writer that cannot use in this model.

Action : Change the MS Reader/Writer.

<MSRW_COMM_ERROR>

Code : 0x2201

Description : The MS Reader/Writer communication error.

Action : Check the communication line and reset the terminal.

<MSRW_WRITE_ERROR>

Code : 0x2202

Description : Error when the MS Reader/Writer is writing on the card.

Action : Clean the header and check the card.

<MSRW_READ_ERROR>

Code : 0x2203

Description : Error when the MS Reader/Writer is reading on the card.

Action : Clean the header and check the card.

Doc No	CIM-7XXX SPECIFICATION	REV	PAGE	DATE
		C	61 OF 63	2011. 03

<IC_CONTACT_ERROR>

Code : 0x2204

Description : Error while the terminal contacts the IC card.

Action : Be sure that the current card is an IC card.

<IC_CONTROL_ERROR>

Code : 0x2205

Description : Error while the terminal executes the IC card command.

Action : Check if the command is able to use in the contacted card.

<MSRW_BLANK_ERROR>

Code : 0x2205

Description : Error while the terminal executes the IC card command.

Action : Check if the command is able to use in the contacted card.

<RF_ERROR>

Code : 0x2300

Description : Unavailable RF module.

Action : Change the RF MODULE

<RF_COMM_ERROR>

Code : 0x2301

Description : Communication error at the RF Module.

Action : Check the connection socket

<RF_AUTHEN_ERROR>

Code : 0x2302

Description : Authentication Error at the RF Module.

Action : Change the 'SECRET KEY'

<RF_WRITE_ERROR>

Code : 0x2303

Description : Error while the terminal writes at the RF Card.

Action : Be sure that the card exists in the detection range.

Doc No	CIM-7XXX SPECIFICATION	REV	PAGE	DATE
		C	62 OF 63	2011. 03

<RF_READ_ERROR>

Code : 0x2304

Description : Error while the terminal reads at the RF Card.

Action: Be sure that the card exists in the detection range.

<RF_DETECT_ERROR>

Error Code : 0x2305

Description : No RF Card.

Action : Insert the RF Card into the terminal.

<RF_AMOUNT_ERROR>

Error Code : 0x2306

Description : Error while the terminal increases(or decreases) the balance at the RF card.

Action : Tune the RF module.

Doc No	CIM-7XXX SPECIFICATION	REV	PAGE	DATE
			C	63 OF 63

PRECAUTIONS

1. Check if the card exists in stacker. Otherwise, it may not issue the card.

2. Check the communication line
 - 1) Communication Port, Baud, Parity, and Data Bit, etc.

3. Check the 'CAPTURE BOX'.

The 'BIN FULL' error might be caused, if you turn on the power in condition that the card exists in the 'CAPTURE BOX' behind the terminal.