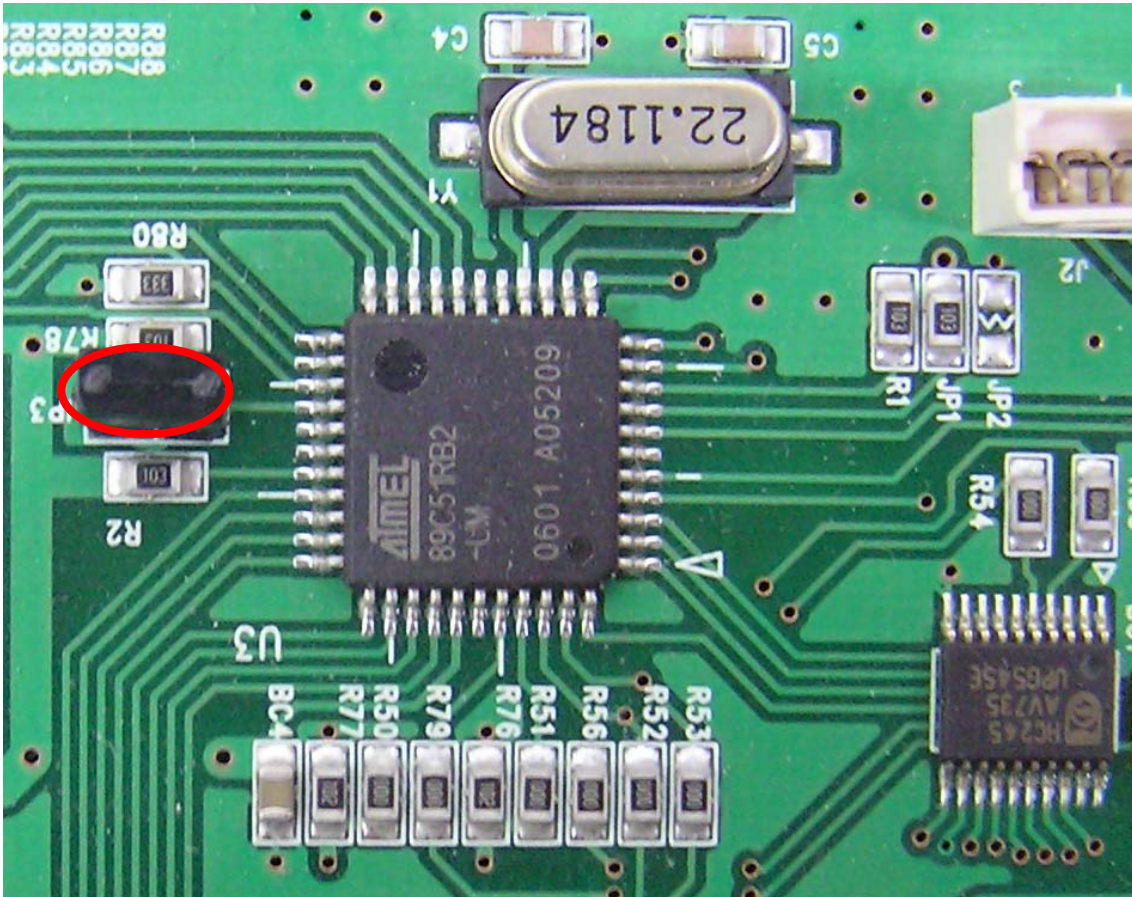
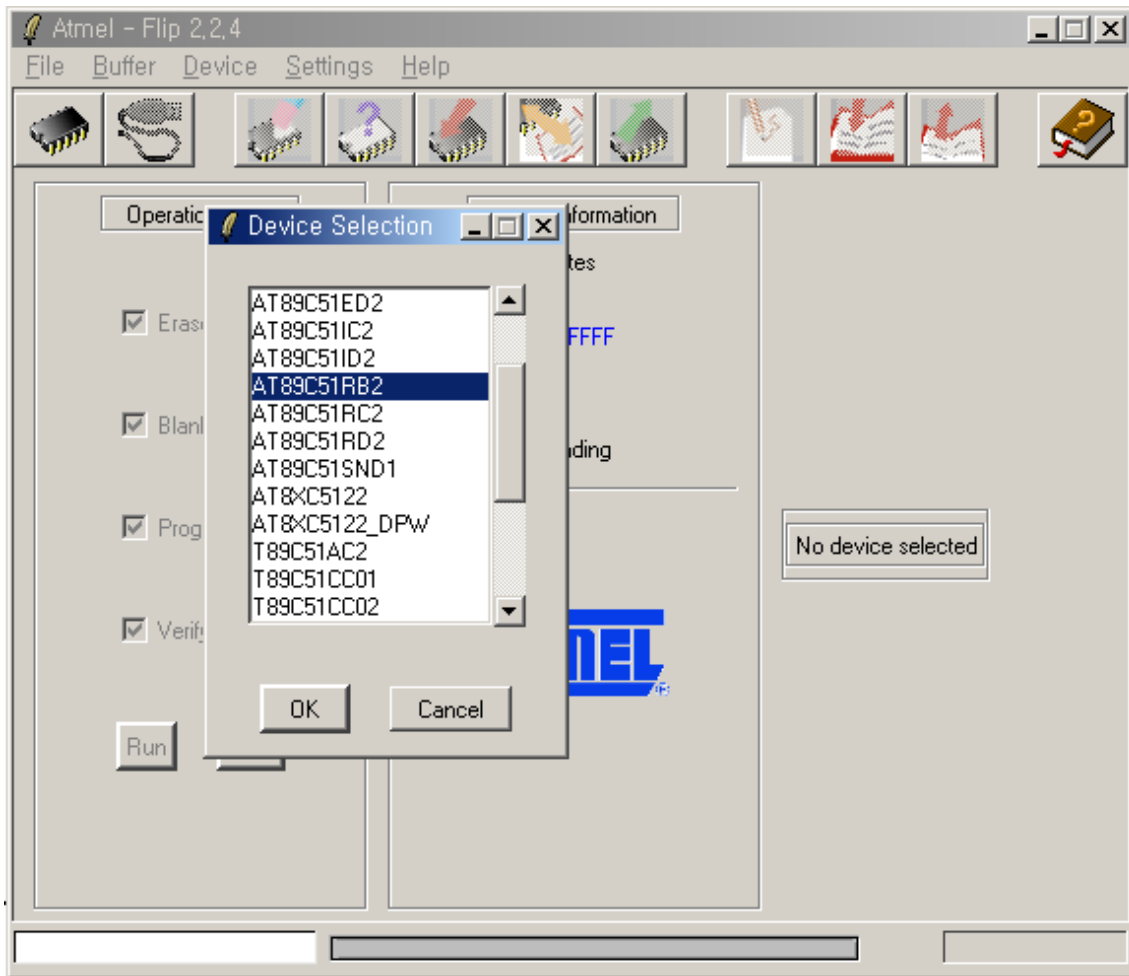


\$. How to write KYT-20XX ROM.

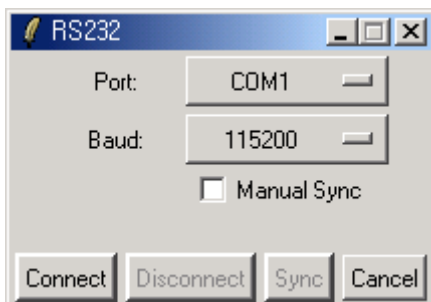
1. Connect the computer to KYT-20XX unit with the RS-232C cable.
2. Close “JP3” jumper as below picture.



3. Turn on the power to KYT20XX board.
4. Execute the FLIP Program.



5. In the menu bar, click on "[Device] => [Select]" item.
6. Select "AT89C51ED2" item and click on "OK" button. (Be sure to check the MCU in the board)
7. In the menu bar, click on "[Settings] => [Communication] => [RS232]" item.
8. Select "Port" and "Baud" item. and then click on "Connect" button. (Default Baud Rate: 115200)



9. Click on "[File] => [Load HEX File...]" menu. And then Select KYT-20XX HEX File.

10. Click on “Run” button in the main window.
 12. Turn off the power to KYT-20XX board.
 11. Open “JP3” jumper.
 13. Turn on the power to KYT-20XX board.
- The end. ---