

KYTronic Corp.,Ltd.	PROJECT NAME	DATE	REVISION	PAGE
	CMT-11XX	2005-07-15	1.0	1/11

## CMT – 11XX DLL Manual

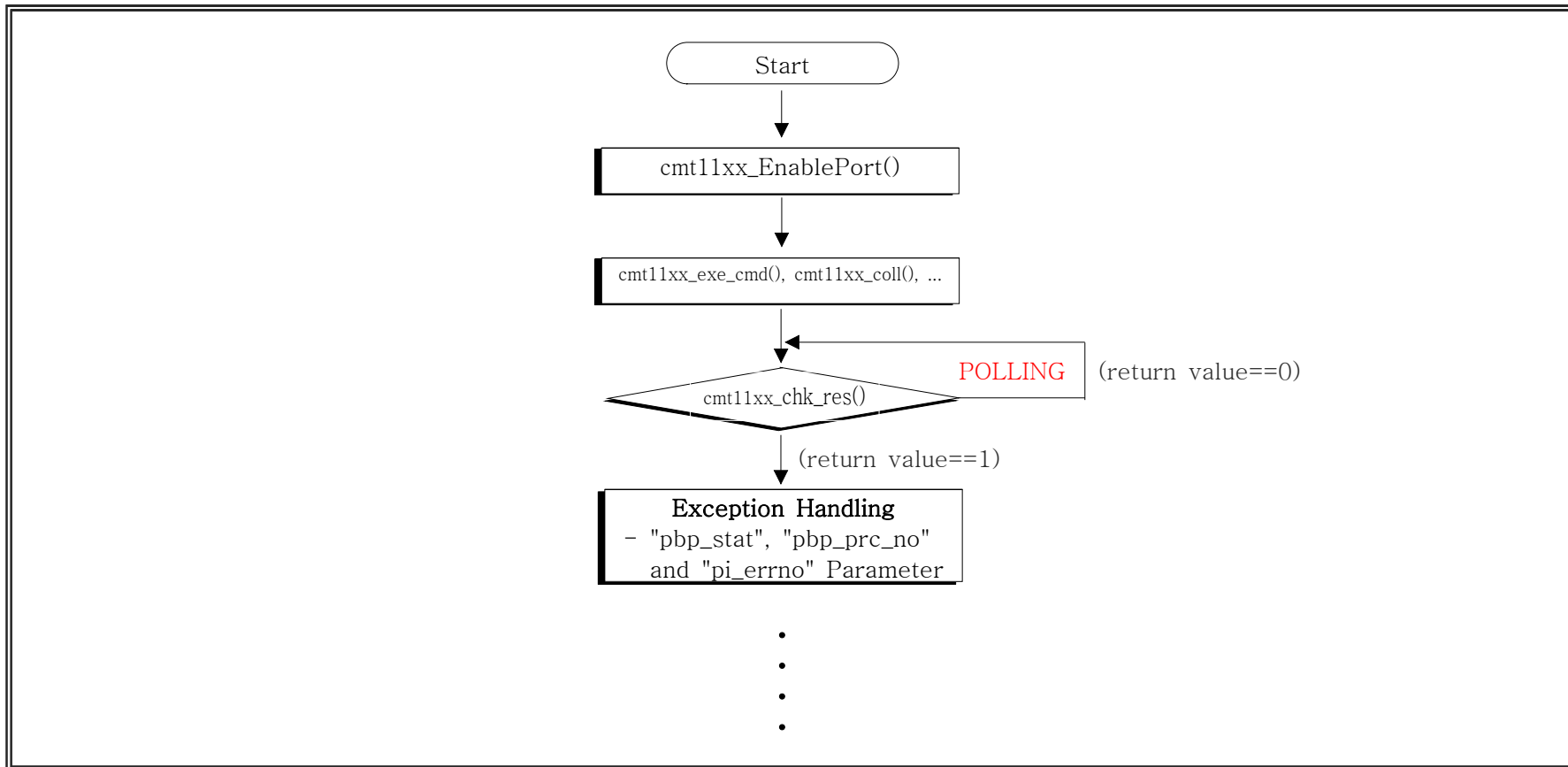
### REVISION HISTORY

CHECK	DATE	DESCRIPTION	REV	PAGE
1	2005.7.15	First edition	1.00	11
2				
3				
4				
5				
6				
7				
8				
9				
10				
11				
12				
13				
14				
15				
16				
17				
18				
19				
20				

KYTronic Corp.,Ltd.	PROJECT NAME	DATE	REVISION	PAGE
	CMT-11XX	2005-07-15	1.0	2/11

\$. "cmt\_11XX.dll" Library

- Library for Windows NT4.0/2000/XP and Windows 98/Millennium.
- Notice: BYTE==unsigned char, UINT==unsigned int.



- Flow Chart -

KYTronic Corp.,Ltd.	PROJECT NAME	DATE	REVISION	PAGE
	CMT-11XX	2005-07-15	1.0	3/11

=====

@. cmt11xx\_EnablePort()

- Set the serial port to communicate with the terminal.

\* PROTOTYPE

- BOOL cmt11xx\_EnablePort(char\* port, BYTE size, BYTE parity, BYTE stopbit, DWORD baudrate, BYTE control);

\* PARAMETERS(Refer to "struct \_DCB" in the MSDN.)

- port : ex) "COM1", "COM2", ...
- size : Number of bits/byte, 4~8.
- parity : 0~4=None,Odd,Even,Mark,Space.
- stopbit : 0,1,2 = 1, 1.5, 2.
- baudrate : Baud rate at which running.
- control : 0,1,2,3 = None, XOn/XOff, RTS/CTS, Both.

\* RETURN

- Normal: 1
- Error : 0

\* REMARKS

- e.g) cmt11xx\_EnablePort("COM1", 8, 0, 0, 38400, 0);
- =====

@. cmt11xx\_DisablePort()

- Close the serial port to communicate with the terminal.

\* PROTOTYPE

KYTronic Corp.,Ltd.	PROJECT NAME	DATE	REVISION	PAGE
	CMT-11XX	2005-07-15	1.0	4/11

- BOOL cmt11xx\_DisablePort();

\* PARAMETERS : void

\* RETURN :

- Normal: 1

- Error : 0

=====

@. cmt11xx\_exe\_cmd()

- Transmit the command at the terminal.

\* PROTOTYPE

- cmt11xx\_exe\_cmd(BYTE pb\_cmd);

\* PARAMETERS : Refer to the spec.

- pb\_cmd

. pb\_cmd==0x30: Error Clear.

. pb\_cmd==0x31: Status Request

. pb\_cmd==0x40: Collect the card in "Stacker #1".

. pb\_cmd==0x41: Collect the card in "Stacker #2".

. pb\_cmd==0x51: Set the Baud rate to 19200 BPS.

. pb\_cmd==0x52: Set the Baud rate to 38400(default) BPS.

. pb\_cmd==0x60: Firmware Version.

. pb\_cmd==0x71: Collect the Jammed card in "Stacker #1" by using solenoid.

. pb\_cmd==0x72: Collect the Jammed card in "Stacker #2" by using solenoid.

\* RETURN

- 0 : Parameter Error.

- 1 ~ 255: The Sequence number about that request(It is utilized to confirm whether

KYTronic Corp.,Ltd.	PROJECT NAME	DATE	REVISION	PAGE
	CMT-11XX	2005-07-15	1.0	5/11

it is the result about request when you read the result.)

\* REMARKS

- It retry 3 time to the automatic when a communication obstacle happens.
- This function can execute all command that is written on the Spec.

=====

@. cmt11xx\_chk\_res()

- Check finishing the execution about the request command. And read the result values about the request command.

\* PROTOTYPE

- int cmt11xx\_chk\_res(unsigned char \*pbp\_stat, unsigned char \* pbp\_prc\_no, int \*pi\_errno);

\* PARAMETERS

- pbp\_stat: The Pointer of the buffer to take the status value(3BYTE) of the terminal.
  - . If the command is "0x60"(Indicate Firmware Version) : Firmware Version information
  - . Other command : Status value of the terminal.(Refer to the spec)
- pbp\_prc\_no: The variable for save the sequence number of the request command to process.(1 byte)
- pi\_errno
  - . Normal: 0
  - . Error : etc(Refer to the Error Code List.)

\* RETURN

- 0: Don't finish the processing.
- 1: Finish the processing.

=====

@. cmt11xx\_exe\_stop()

KYTronic Corp.,Ltd.	PROJECT NAME	DATE	REVISION	PAGE
	CMT-11XX	2005-07-15	1.0	6/11

- Stop process about request command.

\* PROTOTYPE

- void cmt11xx\_exe\_stop()

\* PARAMETERS : void

\* RETURN : void

\* REMARKS

- If you must stop the execution because of the time is delayed.

Call exe\_stop() function.

=====

@. cmt11xx\_call\_src\_ver()

- Display source version of the dll program in the Message Box.

\* PROTOTYPE

- void cmt11xx\_call\_src\_ver()

\* PARAMETERS : void

\* RETURN : void

=====

@. cmt11xx\_clr()

- Error Clear.

\* PROTOTYPE

- int cmt11xx\_clr();

\* PARAMETERS : void

KYTronic Corp.,Ltd.	PROJECT NAME	DATE	REVISION	PAGE
	CMT-11XX	2005-07-15	1.0	7/11

\* RETURN

- 0 : Parameter Error.
- 1 ~ 255: The Sequence number about that request(It is utilized to confirm whether it is the result about request when you read the result.)

=====

@. cmt11xx\_rqt()

- Status Request.

\* PROTOTYPE

- int cmt11xx\_rqt();

\* PARAMETERS : void

\* RETURN

- 0 : Parameter Error.
- 1 ~ 255: The Sequence number about that request(It is utilized to confirm whether it is the result about request when you read the result.)

=====

@. cmt11xx\_coll()

- Collect the card.

\* PROTOTYPE

- int cmt11xx\_coll(BYTE pb\_stk);

\* PARAMETERS

- pb\_stk==1: Collect the card in "Stacker #1".
- pb\_stk==2: Collect the card in "Stacker #2".

KYTronic Corp.,Ltd.	PROJECT NAME	DATE	REVISION	PAGE
	CMT-11XX	2005-07-15	1.0	8/11

- pb\_stk==3: Collect the Jammed card in “Stacker #1” by using solenoid.
- pb\_stk==4: Collect the Jammed card in “Stacker #2” by using solenoid.

\* RETURN

- 0 : Parameter Error.
- 1 ~ 255: The Sequence number about that request(It is utilized to confirm whether it is the result about request when you read the result.)

=====

@. cmt11xx\_set\_baudrate()

- Set the Baud rate.

\* PROTOTYPE

- int cmt11xx\_set\_baudrate(BYTE pb\_pm);

\* PARAMETERS

- pb\_pm==0x51: 19200 BPS
- pb\_pm==0x52: 38400 BPS (Default)

\* RETURN

- 0 : Parameter Error.
- 1 ~ 255: The Sequence number about that request(It is utilized to confirm whether it is the result about request when you read the result.)

=====

@. cmt11xx\_fw\_version()

- Check the Firmware Version.

\* PROTOTYPE



KYTronic Corp.,Ltd.	PROJECT NAME	DATE	REVISION	PAGE
	CMT-11XX	2005-07-15	1.0	9/11

```

- int cmt11xx_fw_version();
* PARAMETERS: void
* RETURN
- 0      : Parameter Error.
- 1 ~ 255: The Sequence number about that request(It is utilized to confirm whether
            it is the result about request when you read the result.)
=====

```

%. Notice(Refer to the spec)

- All command send "Status Request Command" to the automatic for busy flag inspection.(Except cmt11xx\_set\_baudrate() Function)

\$. Error Code List

```

1          : No ACK Error
2          : TIMEOUT Error
3          : Negative Data error
102        : Force termination error
106        : Received data frame error
107        : Received data BCC error
108        : Data Transmission error

```

\$. Implement the Manager Program.

KYTronic Corp.,Ltd.	PROJECT NAME	DATE	REVISION	PAGE
	CMT-11XX	2005-07-15	1.0	10/11

1.Open and set the serial port by calling `cmt11xx_EnablePort()` function in“`cmt_11xx.dll`”.

2.Call `cmt11xx_rqt()`, `cmt11xx_coll()`, ... function according to the deed to do.

The Returned value(`pbp_prc_no`) in an each function (`cmt11xx_exe_cmd()`, `cmt11xx_coll()`, ...) is the sequence number about that request command.

It is utilized to confirm whether it is the result about the request when you read the result of the request command.

3. For confirm the result about the request. First you check finishing the execution

about the request by `cmt11xx_chk_res()` function. if that finished the execution. Process the result values.

4.If you must stop the execution because of the time is delayed. Call `cmt11xx_exe_stop()` function.

5.Call `cmt11xx_DisablePort()` function if you close the serial port.

6. If you changes the setup of the serial port. call `cmt11xx_EnablePort()` function again.

But you must call `cmt11xx_DisablePort()` function for close the existing serial port before call `cmt11xx_EnablePort()` function.