

KYTronics Corp.,Ltd.	PROJECT NAME	DATE	REVISION	PAGE
	KYT-21XX, KYT-25XX, CMT-101X	2006-07-28	2.00	1/8

KYT-21XX, KYT-25XX, CMT-101X DEMO PROGRAM MANUAL

Tel : 82 - 31 - 485 - 9480

Fax : 82 - 31 - 485 - 9488

E-mail : sales@kytronics.co.kr

<http://www.kytronics.co.kr>


KYTronics Corp.,Ltd.	PROJECT NAME	DATE	REVISION	PAGE
	CIM-1XXX	2006-07-28	2.01	2/8


Contents

I. Setup -----	4
1. Baud Rate	
II. KYT-21XX -----	5
1. Confirm the terminal status	
2. Card Dispensing	
3. Error Clear	
4. Dispensing length setting	
III. KYT-25XX -----	6
1. Confirm the terminal status	
2. Card Dispensing	
3. Error Clear	
4. Dispensing length setting	
IV. CMT-101X -----	7
1. Confirm the terminal status	
2. Card Collecting	
3. Error Clear	
4. Wait time setting	


KYTronics Corp.,Ltd.	PROJECT NAME	DATE	REVISION	PAGE
	CIM-1XXX	2006-07-28	2.01	3/8

@. Glossary of Terms.

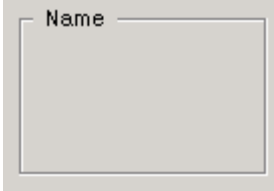
*. Combo box : 

*. Check box : 

*. Radio button : 

*. Edit box : 

*. Menu bar 

*. Group Box : 

KYTronics Corp.,Ltd.	PROJECT NAME	DATE	REVISION	PAGE
	CIM-1XXX	2006-07-28	2.01	4/8

First, In the Windows Start menu, Click on “[Programs]=> [KYTronics]=> [KYT-21XX]” item.

Demo Program’s First Screen.

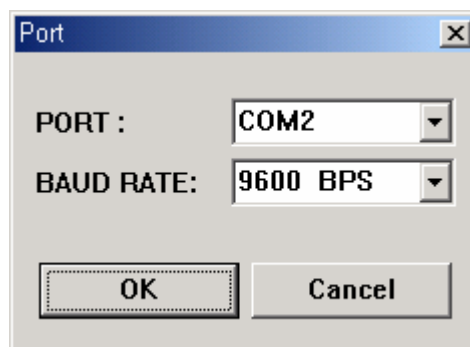
- Double click on the item you want.



I. Setup

1. Host Port

A. In the menu bar. Click on “[Settings] => [Host Port]” menu and the following dialog box will appear.



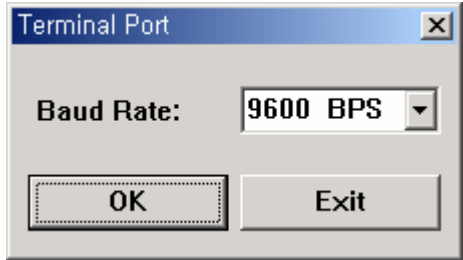
B. Select “PORT” combo box and “Baud Rate” combo box.

C. Click on “OK” Button to reflect setup.

KYTronics Corp.,Ltd.	PROJECT NAME	DATE	REVISION	PAGE
	CIM-1XXX	2006-07-28	2.01	5/8

2. Terminal Port

A. In the menu bar. Click on "[Settings] => [Terminal Port]" menu and the following dialog box will appear.

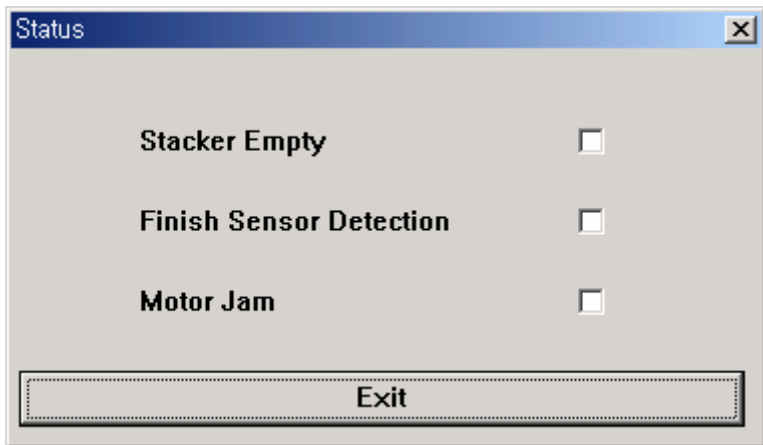


B. Choose the baud rate in the "Baud Rate" combo box.
C. Click on "OK" Button to reflect setup.

II. KYT-21XX

1. Confirm the terminal status.

If you want to confirm the terminal status, click on "Status" button. And then the following dialog box will appear, and the terminal status is displayed in the dialog box.



Stacker Empty : Indicate if the stacker is empty
Finish Sensor Detection : Indicate if the Finish Sensor detected the card.
Motor Jam : Indicate if motor jam error occurred.

KYTronics Corp.,Ltd.	PROJECT NAME	DATE	REVISION	PAGE
	CIM-1XXX	2006-07-28	2.01	6/8

2. Card Dispensing.

If you want to issue the card, click on "Card Dispensing" button.

3. Error Clear.

In case that Motor Jam error occurred, the terminal can't issue the card.

If you want to operate the terminal again, click on "Clear" button.

4. Dispensing length setting.

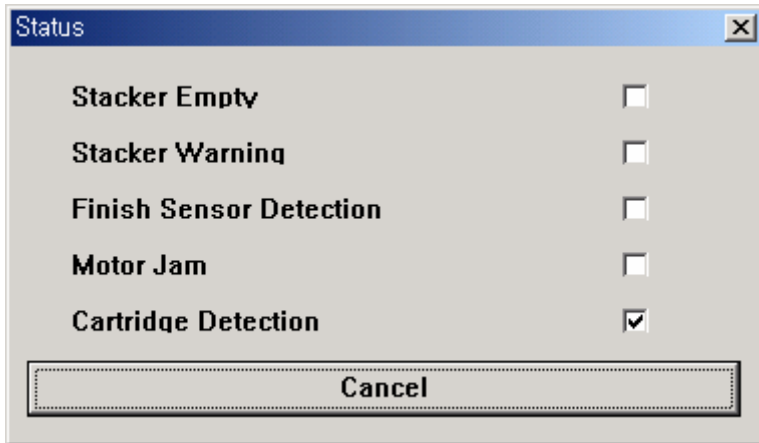
Select "Dispensing length" combo box that you want.

KYTronics Corp.,Ltd.	PROJECT NAME	DATE	REVISION	PAGE
	CIM-1XXX	2006-07-28	2.01	7/8

III. KYT-25XX

1. Confirm the terminal status.

If you want to confirm the terminal status, click on "Status" button. And then the following dialog box will appear, and the terminal status is displayed in the dialog box.



- Stacker Empty : Indicate if the stacker is empty
- Stacker Warning : Indicate if the Cartridge have little card.
- Finish Sensor Detection : Indicate if the Finish Sensor detected the card.
- Motor Jam : Indicate if motor jam error occurred.
- Cartridge Detection : Indicate if the Cartridge is loaded to the unit.

2. Card Dispensing.

If you want to issue the card, click on "Card Dispensing" button.

3. Error Clear.

In case that Motor Jam error occurred, the terminal can't issue the card. If you want to operate the terminal again, click on "Clear" button.

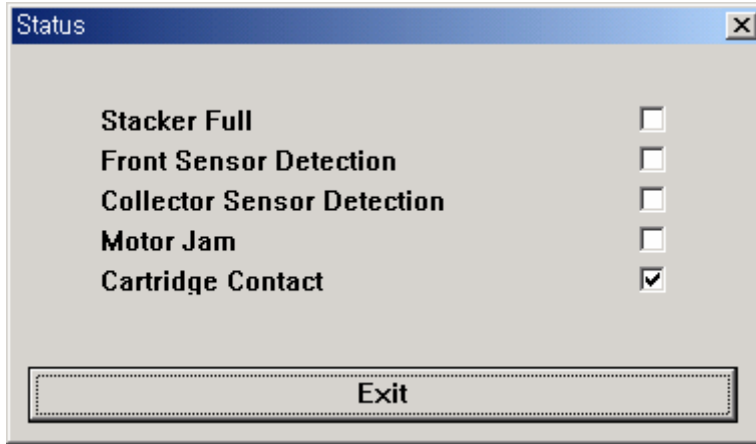
4. Dispensing length setting.

Select "Dispensing length" combo box that you want.

KYTronics Corp.,Ltd.	PROJECT NAME	DATE	REVISION	PAGE
	CIM-1XXX	2006-07-28	2.01	8/8

IV. CMT-101X

1. Confirm the terminal status.



- Stacker Full : Indicate if the Cartridge is full.
- Front Sensor Detection : Indicate if the Front Sensor detected the card.
- Collector Sensor Detection : Indicate if the Collector Sensor detected the card.
- Motor Jam : Indicate if motor jam error occurred.
- Cartridge Contact : Indicate if the Cartridge is loaded to the unit.

2. Card Collecting.

If you want to collect the card, click on "Card Collecting" button.

3. Error Clear.

In case that Motor Jam error occurred, the terminal can't issue the card.

If you want to operate the terminal again, click on "Clear" button.

4. Wait time setting.

Select "Wait Time" combo box that you want.